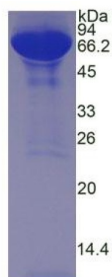


Pig Albumin (ALB) Protein

Catalogue No.: abx065007



SDS-PAGE analysis of native Pig Albumin.

Pig Albumin (ALB) is a native protein isolated from Porcine Serum.

Target:	Albumin (ALB)
Origin:	Pig
Expression:	Native
Tested Applications:	ELISA, WB, SDS-PAGE, IP, CoIP, EMSA
Host:	Pig
Conjugation:	Unconjugated
Form:	Lyophilized
Purity:	> 95% (SDS-PAGE)
Purification:	Purified by salt co-precipitation and isoelectric point co-precipitation.
Reconstitution:	Reconstitute in ddH ₂ O to a concentration of 0.1-1.0 mg/ml. Do not vortex.
Storage:	Store at 2-8 °C for up to one month. Store at -80 °C for up to one year. Avoid repeated freeze/thaw cycles.
Molecular Weight:	Calculated MW: 69.7 kDa Observed MW (SDS-PAGE): 69 kDa
Sequence:	This product is a native protein and the sequence has not been determined.
Buffer:	Prior to lyophilization: 20 mM Tris, 300 mM NaCl, pH 8.0, containing 5% Trehalose.
Activity:	Not tested

Datasheet

Version: 8.0.0

Revision date: 07 Apr 2025



Concentration: Prior to lyophilization: 800 µg/ml

Note: THIS PRODUCT IS FOR RESEARCH USE ONLY. NOT FOR USE IN DIAGNOSTIC, THERAPEUTIC OR COSMETIC PROCEDURES. NOT FOR HUMAN OR ANIMAL CONSUMPTION.

For Reference Only