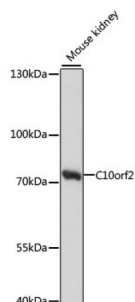


Twinkle Protein, Mitochondrial (C10orf2) Antibody

Catalogue No.: abx004053



Western blot analysis of extracts of Mouse kidney using C10orf2 Antibody (1/1000 dilution).

C10orf2 Antibody is a Rabbit Polyclonal antibody against C10orf2. This gene encodes a hexameric DNA helicase which unwinds short stretches of double-stranded DNA in the 5' to 3' direction and, along with mitochondrial single-stranded DNA binding protein and mtDNA polymerase gamma, is thought to play a key role in mtDNA replication. The protein localizes to the mitochondrial matrix and mitochondrial nucleoids. Mutations in this gene cause infantile onset spinocerebellar ataxia (IOSCA) and progressive external ophthalmoplegia (PEO) and are also associated with several mitochondrial depletion syndromes. Alternative splicing results in multiple transcript variants encoding distinct isoforms.

Target:	Twinkle Protein, Mitochondrial (C10orf2)
Clonality:	Polyclonal
Reactivity:	Mouse
Tested Applications:	WB
Host:	Rabbit
Recommended dilutions:	WB: 1/500 - 1/2000. Optimal dilutions/concentrations should be determined by the end user.
Conjugation:	Unconjugated
Immunogen:	A synthetic peptide corresponding to human C10orf2
Isotype:	IgG
Form:	Liquid
Purification:	Purified by affinity chromatography.
Storage:	Aliquot and store at -20°C. Avoid repeated freeze/thaw cycles.
UniProt Primary AC:	Q96RR1 (UniProt , ExPASy)

Datasheet

Version: 5.0.0

Revision date: 30 Aug 2025



Gene Symbol: TWNK

GeneID: [56652](#)

NCBI Accession: NP_068602.2

KEGG: hsa:56652

String: [9606.ENSP00000309595](#)

Molecular Weight: Calculated MW: 60 kDa/66 kDa/77 kDa
Observed MW: 77 kDa

Buffer: PBS, pH 7.3, containing 0.02% sodium azide, 50% glycerol.

Concentration: 1 mg/ml

Note: THIS PRODUCT IS FOR RESEARCH USE ONLY. NOT FOR USE IN DIAGNOSTIC, THERAPEUTIC OR COSMETIC PROCEDURES. NOT FOR HUMAN OR ANIMAL CONSUMPTION.

For Reference Only