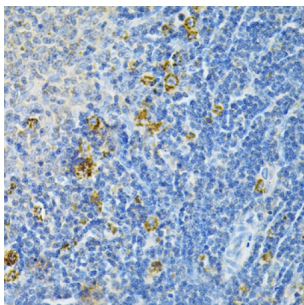
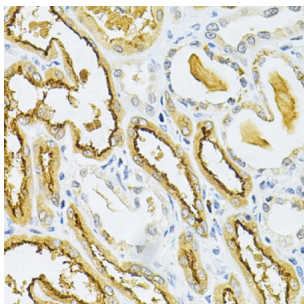


## Glutaredoxin 1 (GLRX) Antibody

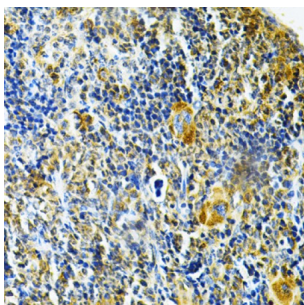
Catalogue No.: abx004064



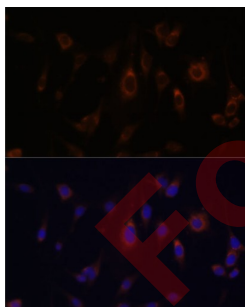
Immunohistochemistry of paraffin-embedded Rat spleen using GLRX Antibody (1/200 dilution, 40x lens).



Immunohistochemistry of paraffin-embedded Human kidney cancer using GLRX Antibody (1/200 dilution, 40x lens).



Immunohistochemistry of paraffin-embedded Mouse spleen using GLRX Antibody (1/200 dilution, 40x lens).



Immunofluorescence analysis of C6 cells using GLRX Antibody (1/100 dilution). Blue: DAPI for nuclear staining.

GLRX Antibody is a Rabbit Polyclonal antibody against GLRX. This gene encodes a member of the glutaredoxin family. The encoded protein is a cytoplasmic enzyme catalyzing the reversible reduction of glutathione-protein mixed disulfides. This enzyme highly contributes to the antioxidant defense system. It is crucial for several signalling pathways by controlling the S-glutathionylation status of signalling mediators. It is involved in beta-amyloid toxicity and Alzheimer's disease. Multiple alternatively spliced transcript variants encoding the same protein have been identified.

**Target:** Glutaredoxin 1 (GLRX)

# Datasheet

Version: 4.0.0  
Revision date: 22 Jun 2025



<b>Clonality:</b>	Polyclonal
<b>Reactivity:</b>	Human, Mouse, Rat
<b>Tested Applications:</b>	IHC, IF/ICC
<b>Host:</b>	Rabbit
<b>Recommended dilutions:</b>	IHC-P: 1/50 - 1/200, IF/ICC: 1/50 - 1/200. Not tested in IHC-F. Optimal dilutions/concentrations should be determined by the end user.
<b>Conjugation:</b>	Unconjugated
<b>Immunogen:</b>	Recombinant fusion protein corresponding to human GLRX
<b>Isotype:</b>	IgG
<b>Form:</b>	Liquid
<b>Purification:</b>	Purified by affinity chromatography.
<b>Storage:</b>	Aliquot and store at -20°C. Avoid repeated freeze/thaw cycles.
<b>UniProt Primary AC:</b>	P35754 ( <a href="#">UniProt</a> , <a href="#">ExPASy</a> )
<b>Gene Symbol:</b>	GLRX
<b>GeneID:</b>	<a href="#">2745</a>
<b>NCBI Accession:</b>	NP_002055.1
<b>KEGG:</b>	hsa:2745
<b>String:</b>	<a href="#">9606.ENSP00000369314</a>
<b>Buffer:</b>	PBS, pH 7.3, containing 0.02% sodium azide, 50% glycerol.
<b>Concentration:</b>	1 mg/ml
<b>Note:</b>	THIS PRODUCT IS FOR RESEARCH USE ONLY. NOT FOR USE IN DIAGNOSTIC, THERAPEUTIC OR COSMETIC PROCEDURES. NOT FOR HUMAN OR ANIMAL CONSUMPTION.