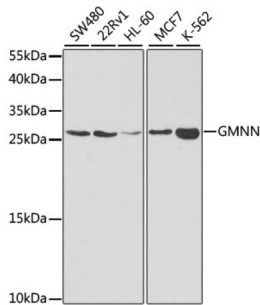
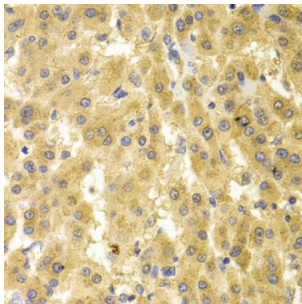


Geminin (GMNN) Antibody

Catalogue No.: abx004065



Western blot analysis of extracts of various cell lines using GMNN Antibody (1/1000 dilution).



Immunohistochemistry of paraffin-embedded Human liver cancer using GMNN Antibody (1/100 dilution, 40x lens).

GMNN Antibody is a Rabbit Polyclonal antibody against GMNN. This gene encodes a protein that plays a critical role in cell cycle regulation. The encoded protein inhibits DNA replication by binding to DNA replication factor Cdt1, preventing the incorporation of minichromosome maintenance proteins into the pre-replication complex. The encoded protein is expressed during the S and G2 phases of the cell cycle and is degraded by the anaphase-promoting complex during the metaphase-anaphase transition. Increased expression of this gene may play a role in several malignancies including colon, rectal and breast cancer. Alternatively spliced transcript variants have been observed for this gene, and two pseudogenes of this gene are located on the short arm of chromosome 16.

Target: Geminin (GMNN)

Clonality: Polyclonal

Reactivity: Human, Mouse, Rat

Tested Applications: WB, IHC

Host: Rabbit

Recommended dilutions: WB: 1/500 - 1/2000, IHC-P: 1/50 - 1/200. Not tested in IHC-F. Optimal dilutions/concentrations should be determined by the end user.

Conjugation: Unconjugated

Immunogen: Recombinant fusion protein corresponding to human GMNN

Datasheet

Version: 5.0.0

Revision date: 16 Aug 2025



Isotype:	IgG
Form:	Liquid
Purification:	Purified by affinity chromatography.
Storage:	Aliquot and store at -20°C. Avoid repeated freeze/thaw cycles.
UniProt Primary AC:	O75496 (UniProt , ExPASy)
Gene Symbol:	GMNN
GeneID:	51053
NCBI Accession:	NP_056979.1
KEGG:	hsa:51053
String:	9606.ENSP00000230056
Molecular Weight:	Calculated MW: 23 kDa Observed MW: 24 kDa
Buffer:	PBS, pH 7.3, containing 0.02% sodium azide, 50% glycerol.
Concentration:	1 mg/ml
Note:	THIS PRODUCT IS FOR RESEARCH USE ONLY. NOT FOR USE IN DIAGNOSTIC, THERAPEUTIC OR COSMETIC PROCEDURES. NOT FOR HUMAN OR ANIMAL CONSUMPTION.