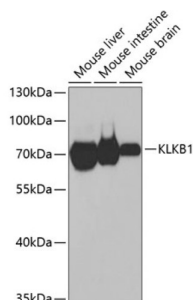
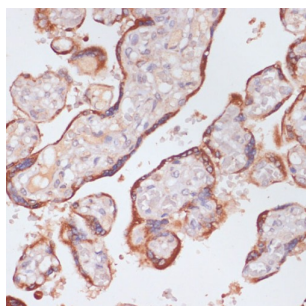


## Plasma Kallikrein (KLKB1) Antibody

Catalogue No.: abx004066



Western blot analysis of extracts of various cell lines using KLKB1 Antibody (1/1000 dilution).



Immunohistochemistry of paraffin-embedded Human placenta using KLKB1 Antibody (1/100 dilution, 40x lens).

KLKB1 Antibody is a Rabbit Polyclonal antibody against KLKB1. Plasma prekallikrein is a glycoprotein that participates in the surface-dependent activation of blood coagulation, fibrinolysis, kinin generation and inflammation. It is synthesized in the liver and secreted into the blood as a single polypeptide chain. Plasma prekallikrein is converted to plasma kallikrein by factor XIIa by the cleavage of an internal Arg-Ile bond. Plasma kallikrein therefore is composed of a heavy chain and a light chain held together by a disulphide bond. The heavy chain originates from the amino-terminal end of the zymogen and contains 4 tandem repeats of 90 or 91 amino acids. Each repeat harbors a novel structure called the apple domain. The heavy chain is required for the surface-dependent pro-coagulant activity of plasma kallikrein. The light chain contains the active site or catalytic domain of the enzyme and is homologous to the trypsin family of serine proteases. Plasma prekallikrein deficiency causes a prolonged activated partial thromboplastin time in patients.

**Target:** Plasma Kallikrein (KLKB1)

**Clonality:** Polyclonal

**Reactivity:** Human, Mouse, Rat

**Tested Applications:** WB, IHC

**Host:** Rabbit

**Recommended dilutions:** WB: 1/500 - 1/2000, IHC-P: 1/50 - 1/200. Not tested in IHC-F. Optimal dilutions/concentrations should be determined by the end user.

**Conjugation:** Unconjugated

**Immunogen:** Recombinant fusion protein corresponding to human KLKB1

# Datasheet

Version: 5.0.0  
Revision date: 01 Mar 2025



Isotype:	IgG
Form:	Liquid
Purification:	Purified by affinity chromatography.
Storage:	Aliquot and store at -20°C. Avoid repeated freeze/thaw cycles.
UniProt Primary AC:	P03952 ( <a href="#">UniProt</a> , <a href="#">ExPASy</a> )
Gene Symbol:	KLKB1
GeneID:	<a href="#">3818</a>
NCBI Accession:	NP_000883.2
KEGG:	hsa:3818
String:	<a href="#">9606.ENSP00000264690</a>
Molecular Weight:	Calculated MW: 71 kDa Observed MW: 71 kDa
Buffer:	PBS, pH 7.3, containing 0.02% sodium azide, 50% glycerol.
Concentration:	1 mg/ml
Note:	THIS PRODUCT IS FOR RESEARCH USE ONLY. NOT FOR USE IN DIAGNOSTIC, THERAPEUTIC OR COSMETIC PROCEDURES. NOT FOR HUMAN OR ANIMAL CONSUMPTION.