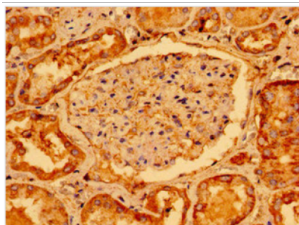
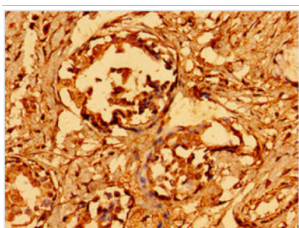


GRB2 Associated Binding Protein 1 (GAB1) Antibody

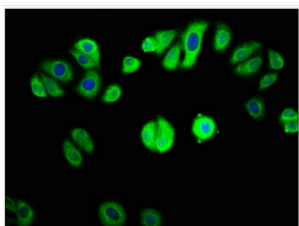
Catalogue No.: abx334018



IHC-P analysis of Human kidney tissue, using GAB1 antibody (1/100 dilution).



IHC-P analysis of Human breast cancer tissue, using GAB1 antibody (1/100 dilution).



IF analysis of HepG2 cells, using GAB1 antibody (1/133 dilution) and secondary Goat Anti-Rabbit IgG H&L antibody conjugated to AF488. The cells were fixed in 4% formaldehyde, permeabilized using 0.2% Triton and blocked in 10% normal Goat Serum. The cells were then incubated with the antibody overnight at 4°C. DAPI was used as a nuclear stain.

GAB1 Antibody is a Rabbit Polyclonal against GAB1.

Target: GRB2 Associated Binding Protein 1 (GAB1)

Clonality: Polyclonal

Reactivity: Human

Tested Applications: ELISA, IHC, IF/ICC

Host: Rabbit

Recommended dilutions: IHC: 1/20 - 1/200, IF/ICC: 1/50 - 1/200. Optimal dilutions/concentrations should be determined by the end user.

Conjugation: Unconjugated

Datasheet

Version: 3.0.0
Revision date: 30 Sep 2025



| | |
|----------------------------|--|
| Immunogen: | Recombinant Human GRB2-associated-binding protein 1 protein (119-329AA). |
| Isotype: | IgG |
| Form: | Liquid |
| Purity: | > 95% |
| Purification: | Purified by Protein G. |
| Storage: | Aliquot and store at -20°C. Avoid repeated freeze/thaw cycles. |
| UniProt Primary AC: | Q13480 (UniProt , ExPASy) |
| Gene Symbol: | GAB1 |
| GeneID: | 2549 |
| KEGG: | hsa:2549 |
| String: | 9606.ENSP00000262995 |
| Buffer: | 0.01 M PBS, pH 7.4, 0.03% Proclin-300 and 50% Glycerol. |
| Concentration: | 1 mg/ml |
| Note: | THIS PRODUCT IS FOR RESEARCH USE ONLY. NOT FOR USE IN DIAGNOSTIC, THERAPEUTIC OR COSMETIC PROCEDURES. NOT FOR HUMAN OR ANIMAL CONSUMPTION. |