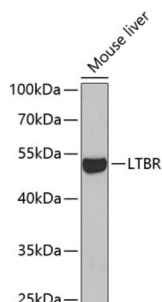


Lymphotoxin Beta Receptor (LTBR) Antibody

Catalogue No.: abx004093



Western blot analysis of extracts of Mouse liver using LTBR Antibody (1/1000 dilution).

LTBR Antibody is a Rabbit Polyclonal antibody against LTBR. This gene encodes a member of the small leucine-rich proteoglycan (SLRP) family that includes decorin, biglycan, fibromodulin, keratocan, epiphykan, and osteoglycin. In these bifunctional molecules, the protein moiety binds collagen fibrils and the highly charged hydrophilic glycosaminoglycans regulate interfibrillar spacings. Lumican is the major keratan sulfate proteoglycan of the cornea but is also distributed in interstitial collagenous matrices throughout the body. Lumican may regulate collagen fibril organization and circumferential growth, corneal transparency, and epithelial cell migration and tissue repair.

Target:	Lymphotoxin Beta Receptor (LTBR)
Clonality:	Polyclonal
Reactivity:	Mouse
Tested Applications:	WB
Host:	Rabbit
Recommended dilutions:	WB: 1/500 - 1/2000. Optimal dilutions/concentrations should be determined by the end user.
Conjugation:	Unconjugated
Immunogen:	Recombinant fusion protein corresponding to human LTBR
Isotype:	IgG
Form:	Liquid
Purification:	Purified by affinity chromatography.
Storage:	Aliquot and store at -20°C. Avoid repeated freeze/thaw cycles.
UniProt Primary AC:	P51884 (UniProt , ExPASy)

Datasheet

Version: 4.0.0

Revision date: 22 Aug 2025



Gene Symbol: LUM

GeneID: [4060](#)

NCBI Accession: NP_002336.1

KEGG: hsa:4060

String: [9606.ENSP00000266718](#)

Molecular Weight: Calculated MW: 44 kDa/46 kDa
Observed MW: 47 kDa

Buffer: PBS, pH 7.3, containing 0.02% sodium azide, 50% glycerol.

Concentration: 1 mg/ml

Note: THIS PRODUCT IS FOR RESEARCH USE ONLY. NOT FOR USE IN DIAGNOSTIC, THERAPEUTIC OR COSMETIC PROCEDURES. NOT FOR HUMAN OR ANIMAL CONSUMPTION.

For Reference Only