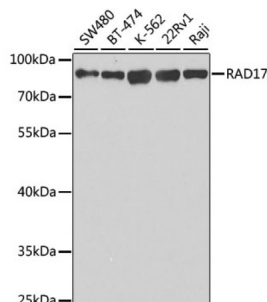
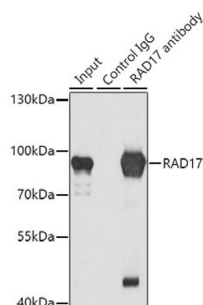


## RAD17 Checkpoint Clamp Loader Component (RAD17) Antibody

Catalogue No.: abx004100



Western blot analysis of various lysates using RAD17 Antibody at 1/1000 dilution. Secondary antibody: HRP-conjugated Goat anti-Rabbit IgG (H+L) at 1/10000 dilution. Lysates/proteins: 25 µg per lane. Blocking buffer: 3% nonfat dry milk in TBST. Exposure time: 3s.



Immunoprecipitation analysis of 200 µg extracts of K562 cells using 1 µg RAD17 antibody. Western blot was performed from the immunoprecipitate using RAD17 antibody at a dilution of 1/1000.

RAD17 Antibody is a Rabbit Polyclonal antibody against RAD17. The protein encoded by this gene is highly similar to the gene product of *Schizosaccharomyces pombe* rad17, a cell cycle checkpoint gene required for cell cycle arrest and DNA damage repair in response to DNA damage. This protein shares strong similarity with DNA replication factor C (RFC), and can form a complex with RFCs. This protein binds to chromatin prior to DNA damage and is phosphorylated by the checkpoint kinase ATR following damage. This protein recruits the RAD1-RAD9-HUS1 checkpoint protein complex onto chromatin after DNA damage, which may be required for its phosphorylation. The phosphorylation of this protein is required for the DNA-damage-induced cell cycle G2 arrest, and is thought to be a critical early event during checkpoint signaling in DNA-damaged cells. Multiple alternatively spliced transcript variants of this gene, which encode four distinct protein isoforms, have been reported. Two pseudogenes, located on chromosomes 7 and 13, have been identified.

**Target:** RAD17 Checkpoint Clamp Loader Component (RAD17)

**Clonality:** Polyclonal

**Reactivity:** Human

**Tested Applications:** ELISA, WB, IP

**Host:** Rabbit

**Recommended dilutions:** ELISA: 1 µg/ml, WB: 1/500 - 1/2000, IP: 0.5 µg - 4 µg antibody per 200 µg - 400 µg extracts of whole cells. Optimal dilutions/concentrations should be determined by the end user.

**Conjugation:** Unconjugated

**Immunogen:** Recombinant protein corresponding to RAD17. The exact sequence is proprietary.

# Datasheet

Version: 6.0.0  
Revision date: 26 Aug 2025



Isotype:	IgG
Form:	Liquid
Purification:	Purified by affinity chromatography.
Storage:	Aliquot and store at -20°C. Avoid repeated freeze/thaw cycles.
UniProt Primary AC:	O75943 ( <a href="#">UniProt</a> , <a href="#">ExPASy</a> )
Gene Symbol:	RAD17
GeneID:	<a href="#">5884</a>
NCBI Accession:	NP_002864.1
KEGG:	hsa:5884
String:	<a href="#">9606.ENSP00000426191</a>
Molecular Weight:	Calculated MW: 77 kDa Observed MW: 77 kDa
Buffer:	PBS, pH 7.3, containing 0.02% sodium azide, 50% glycerol.
Concentration:	> 0.2 mg/ml
Note:	THIS PRODUCT IS FOR RESEARCH USE ONLY. NOT FOR USE IN DIAGNOSTIC, THERAPEUTIC OR COSMETIC PROCEDURES. NOT FOR HUMAN OR ANIMAL CONSUMPTION.