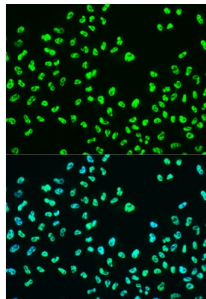


Breast Cancer Type 1 Susceptibility Protein Phospho-Ser988 (BRCA1 pS988) Antibody

Catalogue No.: abx000366



Immunohistochemistry analysis of paraffin-embedded Human breast cancer tissue using Phospho-BRCA1-S988 Antibody at a dilution of 1/100 (40x lens). High pressure antigen retrieval was performed in 0.01 M Tris-EDTA buffer (pH 9.0) prior to IHC staining.

BRCA1 (pS988) Antibody is a Rabbit Polyclonal antibody against BRCA1 (pS988). This gene encodes a nuclear phosphoprotein that plays a role in maintaining genomic stability, and it also acts as a tumor suppressor. The encoded protein combines with other tumor suppressors, DNA damage sensors, and signal transducers to form a large multi-subunit protein complex known as the BRCA1-associated genome surveillance complex (BASC). This gene product associates with RNA polymerase II, and through the C-terminal domain, also interacts with histone deacetylase complexes. This protein thus plays a role in transcription, DNA repair of double-stranded breaks, and recombination. Mutations in this gene are responsible for approximately 40% of inherited breast cancers and more than 80% of inherited breast and ovarian cancers. Alternative splicing plays a role in modulating the subcellular localization and physiological function of this gene. Many alternatively spliced transcript variants, some of which are disease-associated mutations, have been described for this gene, but the full-length nature of only some of these variants has been described. A related pseudogene, which is also located on chromosome 17, has been identified.

Target:	Breast Cancer Type 1 Susceptibility Protein Phospho-Ser988 (BRCA1 pS988)
Clonality:	Polyclonal
Target Modification:	Ser988
Modification:	Phosphorylation
Reactivity:	Human
Tested Applications:	ELISA, IHC, IF/ICC
Host:	Rabbit
Recommended dilutions:	ELISA: 1 µg/ml, IHC-P: 1/50 - 1/200, IF/ICC: 1/50 - 1/200. Not tested in IHC-F. Optimal dilutions/concentrations should be determined by the end user.
Conjugation:	Unconjugated
Immunogen:	A synthetic phosphorylated peptide around S988 of human BRCA1.

Datasheet

Version: 3.0.0
Revision date: 12 Oct 2025



Isotype:	IgG
Form:	Liquid
Purification:	Purified by affinity chromatography.
Storage:	Aliquot and store at -20°C. Avoid repeated freeze/thaw cycles.
UniProt Primary AC:	P38398 (UniProt , ExPASy)
Gene Symbol:	BRCA1
GeneID:	672
NCBI Accession:	NP_009225.1
KEGG:	hsa:672
String:	9606.ENSP00000418960
Molecular Weight:	Calculated MW: 208 kDa
Buffer:	PBS, pH 7.3, containing 0.02% sodium azide, 50% glycerol.
Concentration:	> 0.2 mg/ml
Note:	THIS PRODUCT IS FOR RESEARCH USE ONLY. NOT FOR USE IN DIAGNOSTIC, THERAPEUTIC OR COSMETIC PROCEDURES. NOT FOR HUMAN OR ANIMAL CONSUMPTION.