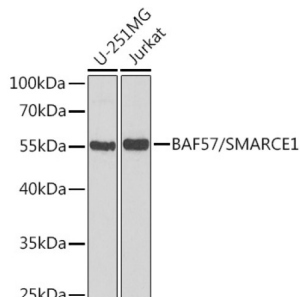
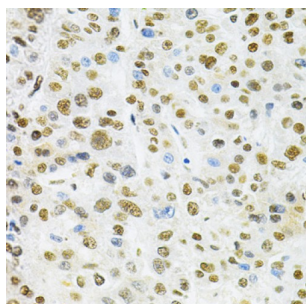


SWI/SNF-Related Matrix-Associated Actin-Dependent Regulator of Chromatin Subfamily E Member 1 (SMARCE1) Antibody

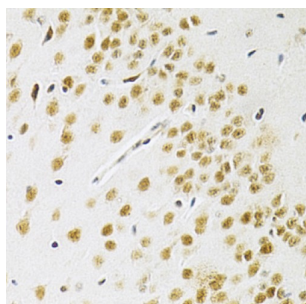
Catalogue No.: abx004102



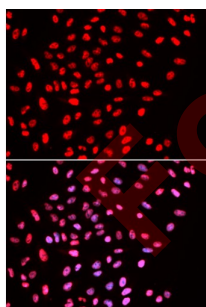
Western blot analysis of various lysates using BAF57/SMARCE1 Antibody at 1/1000 dilution. Secondary antibody: HRP-conjugated Goat anti-Rabbit IgG (H+L) at 1/10000 dilution. Lysates/proteins: 25 µg per lane. Blocking buffer: 3% nonfat dry milk in TBST. Exposure time: 90s.



Immunohistochemistry analysis of paraffin-embedded Human liver cancer using BAF57/SMARCE1 Antibody at dilution of 1/200 (40x lens). Microwave antigen retrieval performed in 0.01 M PBS Buffer (pH 7.2) prior to IHC staining.



Immunohistochemistry analysis of paraffin-embedded Mouse brain using BAF57/SMARCE1 Antibody at dilution of 1/200 (40x lens). Microwave antigen retrieval performed in 0.01 M PBS Buffer (pH 7.2) prior to IHC staining.



Immunofluorescence analysis of U2OS cells using BAF57/SMARCE1 Antibody. Secondary antibody: Cy3-conjugated Goat anti-Rabbit IgG (H+L) at 1/500 dilution. Blue: DAPI for nuclear staining.

SMARCE1 Antibody is a Rabbit Polyclonal antibody against SMARCE1. The protein encoded by this gene is part of the large ATP-dependent chromatin remodeling complex SWI/SNF, which is required for transcriptional activation of genes normally repressed by chromatin. The encoded protein, either alone or when in the SWI/SNF complex, can bind to 4-way junction DNA, which is thought to mimic the topology of DNA as it enters or exits the nucleosome. The protein contains a DNA-binding HMG domain, but disruption of this domain does not abolish the DNA-binding or nucleosome-displacement activities of the SWI/SNF complex. Unlike most of the SWI/SNF complex proteins, this protein has no yeast counterpart.

Datasheet

Version: 5.0.0
Revision date: 05 Mar 2025



Target:	SWI/SNF-Related Matrix-Associated Actin-Dependent Regulator of Chromatin Subfamily E Member 1 (SMARCE1)
Clonality:	Polyclonal
Reactivity:	Human, Mouse
Tested Applications:	ELISA, WB, IHC, IF/ICC
Host:	Rabbit
Recommended dilutions:	ELISA: 1 µg/ml, WB: 1/500 - 1/2000, IHC-P: 1/50 - 1/200, IF/ICC: 1/50 - 1/200. Not tested in IHC-F. Optimal dilutions/concentrations should be determined by the end user.
Conjugation:	Unconjugated
Immunogen:	Recombinant fusion protein containing a sequence corresponding to amino acids 1-411 of human BAF57/BAF57/SMARCE1.
Isotype:	IgG
Form:	Liquid
Purification:	Purified by affinity chromatography.
Storage:	Aliquot and store at -20°C. Avoid repeated freeze/thaw cycles.
UniProt Primary AC:	Q969G3 (UniProt , ExPASy)
Gene Symbol:	SMARCE1
GeneID:	6605
OMIM:	603111
NCBI Accession:	NP_003070.3
HGNC:	11109
KEGG:	hsa:6605
Ensembl:	ENSG00000073584
String:	9606.ENSP00000323967
Molecular Weight:	Calculated MW: 47 kDa Observed MW: 55 kDa

Datasheet

Version: 5.0.0

Revision date: 05 Mar 2025



Buffer: PBS, pH 7.3, containing 0.02% sodium azide, 50% glycerol.

Concentration: > 0.2 mg/ml

Note: THIS PRODUCT IS FOR RESEARCH USE ONLY. NOT FOR USE IN DIAGNOSTIC, THERAPEUTIC OR COSMETIC PROCEDURES. NOT FOR HUMAN OR ANIMAL CONSUMPTION.

For Reference Only