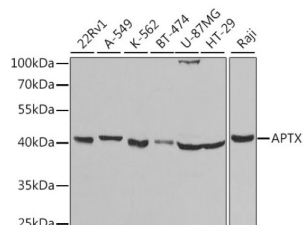
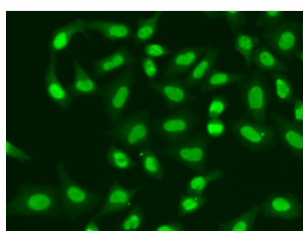


## Aprataxin (APTX) Antibody

Catalogue No.: abx004105



Western blot analysis of extracts of various cell lines using APTX Antibody (1/1000 dilution).



Immunofluorescence analysis of A549 cells using APTX Antibody

APTX Antibody is a Rabbit Polyclonal antibody against APTX. This gene encodes a member of the histidine triad (HIT) superfamily. The encoded protein may play a role in single-stranded DNA repair through its nucleotide-binding activity and its diadenosine polyphosphate hydrolase activity. Mutations in this gene have been associated with ataxia-ocular apraxia. Alternatively spliced transcript variants have been identified for this gene.

**Target:** Aprataxin (APTX)

**Clonality:** Polyclonal

**Reactivity:** Human

**Tested Applications:** WB, IF/ICC

**Host:** Rabbit

**Recommended dilutions:** WB: 1/500 - 1/2000, IF/ICC: 1/50 - 1/100. Optimal dilutions/concentrations should be determined by the end user.

**Conjugation:** Unconjugated

**Immunogen:** Recombinant fusion protein corresponding to human APTX

**Isotype:** IgG

**Form:** Liquid

# Datasheet

Version: 3.0.0  
Revision date: 15 Jun 2025



<b>Purification:</b>	Purified by affinity chromatography.
<b>Storage:</b>	Aliquot and store at -20°C. Avoid repeated freeze/thaw cycles.
<b>UniProt Primary AC:</b>	Q7Z2E3 ( <a href="#">UniProt</a> , <a href="#">ExPASy</a> )
<b>Gene Symbol:</b>	APTX
<b>GeneID:</b>	<a href="#">54840</a>
<b>NCBI Accession:</b>	NP_001182178.1
<b>KEGG:</b>	hsa:54840
<b>String:</b>	<a href="#">9606.ENSP00000400806</a>
<b>Molecular Weight:</b>	Calculated MW: 5 kDa/13 kDa/19-40 kDa Observed MW: 40 kDa
<b>Buffer:</b>	PBS, pH 7.3, containing 0.02% sodium azide, 50% glycerol.
<b>Concentration:</b>	1 mg/ml
<b>Note:</b>	THIS PRODUCT IS FOR RESEARCH USE ONLY. NOT FOR USE IN DIAGNOSTIC, THERAPEUTIC OR COSMETIC PROCEDURES. NOT FOR HUMAN OR ANIMAL CONSUMPTION.