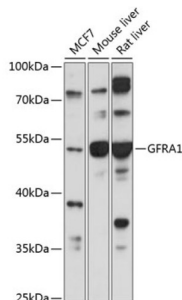


GDNF Family Receptor Alpha 1 (GFRA1) Antibody

Catalogue No.: abx004114



Western blot analysis of extracts of various cell lines using GFRA1 Antibody (1/1000 dilution).

GFRA1 Antibody is a Rabbit Polyclonal antibody against GFRA1. Glial cell line-derived neurotrophic factor (GDNF) and neurturin (NTN) are two structurally related, potent neurotrophic factors that play key roles in the control of neuron survival and differentiation. The protein encoded by this gene is a member of the GDNF receptor family. It is a glycosylphosphatidylinositol(GPI)-linked cell surface receptor for both GDNF and NTN, and mediates activation of the RET tyrosine kinase receptor. This gene is a candidate gene for Hirschsprung disease. Multiple alternatively spliced transcript variants have been described for this gene.

Target:	GDNF Family Receptor Alpha 1 (GFRA1)
Clonality:	Polyclonal
Reactivity:	Human, Mouse, Rat
Tested Applications:	WB
Host:	Rabbit
Recommended dilutions:	WB: 1/500 - 1/2000. Optimal dilutions/concentrations should be determined by the end user.
Conjugation:	Unconjugated
Immunogen:	Recombinant fusion protein corresponding to human GFRA1
Isotype:	IgG
Form:	Liquid
Purification:	Purified by affinity chromatography.
Storage:	Aliquot and store at -20°C. Avoid repeated freeze/thaw cycles.
UniProt Primary AC:	P56159 (UniProt , ExPASy)

Datasheet

Version: 4.0.0

Revision date: 22 May 2025



Gene Symbol: GFRA1

GeneID: [2674](#)

NCBI Accession: NP_005255.1

KEGG: hsa:2674

String: [9606.ENSP00000347591](#)

Molecular Weight: Calculated MW: 50 kDa/51 kDa
Observed MW: 51 kDa

Buffer: PBS, pH 7.3, containing 0.01% thiomersal, 50% glycerol.

Concentration: 1 mg/ml

Note: THIS PRODUCT IS FOR RESEARCH USE ONLY. NOT FOR USE IN DIAGNOSTIC, THERAPEUTIC OR COSMETIC PROCEDURES. NOT FOR HUMAN OR ANIMAL CONSUMPTION.

For Reference Only