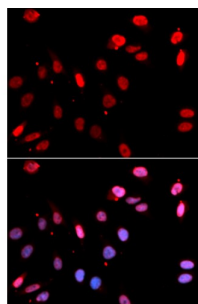
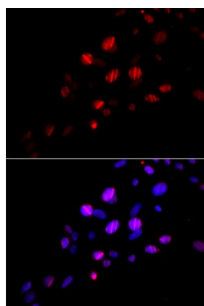


## RAD18, E3 Ubiquitin Protein Ligase (RAD18) Antibody

Catalogue No.: abx004120



Immunofluorescence analysis of U2OS cells using RAD18 Antibody



Immunofluorescence analysis of U2OS cells using RAD18 Antibody

RAD18 Antibody is a Rabbit Polyclonal antibody against RAD18. The protein encoded by this gene is highly similar to S. cerevisiae DNA damage repair protein Rad18. Yeast Rad18 functions through its interaction with Rad6, which is an ubiquitin-conjugating enzyme required for post-replication repair of damaged DNA. Similar to its yeast counterpart, this protein is able to interact with the human homolog of yeast Rad6 protein through a conserved ring-finger motif. Mutation of this motif results in defective replication of UV-damaged DNA and hypersensitivity to multiple mutagens.

**Target:** RAD18, E3 Ubiquitin Protein Ligase (RAD18)**Clonality:** Polyclonal**Reactivity:** Human, Mouse, Rat**Tested Applications:** IF/ICC**Host:** Rabbit**Recommended dilutions:** IF/ICC: 1/50 - 1/200. Optimal dilutions/concentrations should be determined by the end user.**Conjugation:** Unconjugated**Immunogen:** Recombinant fusion protein corresponding to human RAD18**Isotype:** IgG

# Datasheet

Version: 4.0.0

Revision date: 08 Sep 2025



|                            |  |
|----------------------------|--|
| <b>Form:</b>               | Liquid   |
| <b>Purification:</b>       | Purified by affinity chromatography.   |
| <b>Storage:</b>            | Aliquot and store at -20°C. Avoid repeated freeze/thaw cycles.   |
| <b>UniProt Primary AC:</b> | Q9NS91 ( <a href="#">UniProt</a> , <a href="#">ExPASy</a> )  |
| <b>Gene Symbol:</b>        | RAD18  |
| <b>GeneID:</b>             | <a href="#">56852</a>  |
| <b>NCBI Accession:</b>     | NP_064550.3  |
| <b>String:</b>             | <a href="#">9606.ENSP00000264926</a>   |
| <b>Buffer:</b>             | PBS, pH 7.3, containing 0.02% sodium azide, 50% glycerol.  |
| <b>Concentration:</b>      | 1 mg/ml  |
| <b>Note:</b>               | THIS PRODUCT IS FOR RESEARCH USE ONLY. NOT FOR USE IN DIAGNOSTIC, THERAPEUTIC OR COSMETIC PROCEDURES. NOT FOR HUMAN OR ANIMAL CONSUMPTION. |

For Reference Only