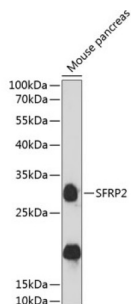
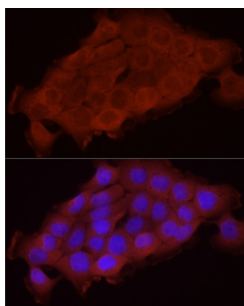


## Secreted Frizzled Related Protein 2 (SFRP2) Antibody

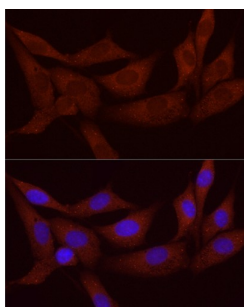
Catalogue No.: abx004122



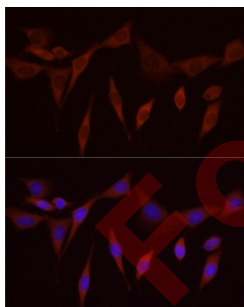
Western blot analysis of extracts of mouse pancreas using SFRP2 Antibody (1/3000 dilution).



Immunofluorescence analysis of A431 cells using SFRP2 Antibody (1/50 dilution, 40x lens).  
Blue: DAPI for nuclear staining.



Immunofluorescence analysis of NIH/3T3 cells using SFRP2 Antibody (1/50 dilution, 40x lens).  
Blue: DAPI for nuclear staining.



Immunofluorescence analysis of PC-12 cells using SFRP2 Antibody (1/50 dilution, 40x lens).  
Blue: DAPI for nuclear staining.

SFRP2 Antibody is a Rabbit Polyclonal antibody against SFRP2. This gene encodes a member of the SFRP family that contains a cysteine-rich domain homologous to the putative Wnt-binding site of Frizzled proteins. SFRPs act as soluble modulators of Wnt signaling. Methylation of this gene is a potential marker for the presence of colorectal cancer.

**Target:** Secreted Frizzled Related Protein 2 (SFRP2)

**Clonality:** Polyclonal

# Datasheet

Version: 5.0.0  
Revision date: 12 Mar 2025



<b>Reactivity:</b>	Human, Mouse, Rat
<b>Tested Applications:</b>	WB, IF/ICC
<b>Host:</b>	Rabbit
<b>Recommended dilutions:</b>	WB: 1/1000 - 1/3000, IF/ICC: 1/50 - 1/200. Optimal dilutions/concentrations should be determined by the end user.
<b>Conjugation:</b>	Unconjugated
<b>Immunogen:</b>	A synthetic peptide corresponding to human SFRP2
<b>Isotype:</b>	IgG
<b>Form:</b>	Liquid
<b>Purification:</b>	Purified by affinity chromatography.
<b>Storage:</b>	Aliquot and store at -20°C. Avoid repeated freeze/thaw cycles.
<b>UniProt Primary AC:</b>	Q96HF1 ( <a href="#">UniProt</a> , <a href="#">ExPASy</a> )
<b>Gene Symbol:</b>	SFRP2
<b>GeneID:</b>	<a href="#">6423</a>
<b>NCBI Accession:</b>	NP_003004.1
<b>KEGG:</b>	hsa:6423
<b>String:</b>	<a href="#">9606.ENSP00000274063</a>
<b>Molecular Weight:</b>	Calculated MW: 33 kDa Observed MW: 33 kDa
<b>Buffer:</b>	PBS, pH 7.3, containing 0.01% thiomersal, 50% glycerol.
<b>Concentration:</b>	1 mg/ml
<b>Note:</b>	THIS PRODUCT IS FOR RESEARCH USE ONLY. NOT FOR USE IN DIAGNOSTIC, THERAPEUTIC OR COSMETIC PROCEDURES. NOT FOR HUMAN OR ANIMAL CONSUMPTION.