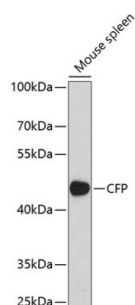
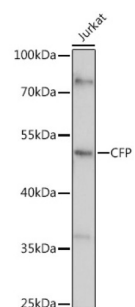


## Properdin (CFP) Antibody

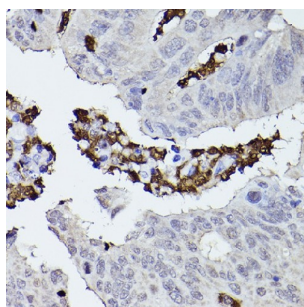
Catalogue No.: abx004133



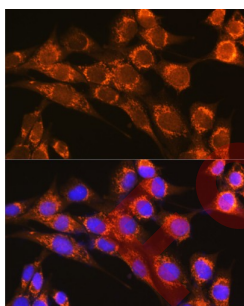
Western blot analysis of extracts of mouse spleen using CFP Antibody (1/1000 dilution).



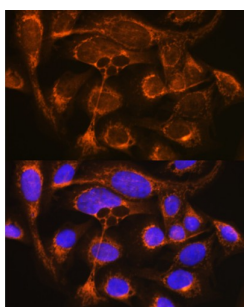
Western blot analysis of extracts of Jurkat cells using CFP Antibody (1/1000 dilution).



Immunohistochemistry of paraffin-embedded human colon carcinoma using CFP Antibody (1/50 dilution, 40x lens). High pressure antigen retrieval was performed in 10 mM citrate buffer pH 6.0 before commencing with IHC staining protocol.



Immunofluorescence analysis of NIH-3T3 cells using CFP Antibody (1/100 dilution, 40x lens). Blue: DAPI for nuclear staining.



Immunofluorescence analysis of U2OS cells using CFP Antibody (1/100 dilution, 40x lens). Blue: DAPI for nuclear staining.

# Datasheet

Version: 4.0.0  
Revision date: 28 Aug 2025



CFP Antibody is a Rabbit Polyclonal antibody against CFP. This gene encodes a plasma glycoprotein that positively regulates the alternative complement pathway of the innate immune system. This protein binds to many microbial surfaces and apoptotic cells and stabilizes the C3- and C5-convertase enzyme complexes in a feedback loop that ultimately leads to formation of the membrane attack complex and lysis of the target cell. Mutations in this gene result in two forms of properdin deficiency, which results in high susceptibility to meningococcal infections. Multiple alternatively spliced variants, encoding the same protein, have been identified.

<b>Target:</b>	Properdin (CFP)
<b>Clonality:</b>	Polyclonal
<b>Reactivity:</b>	Human, Mouse, Rat
<b>Tested Applications:</b>	WB, IHC, IF/ICC
<b>Host:</b>	Rabbit
<b>Recommended dilutions:</b>	WB: 1/500 - 1/2000, IHC-P: 1/50 - 1/200, IF/ICC: 1/50 - 1/200. Not tested in IHC-F. Optimal dilutions/concentrations should be determined by the end user.
<b>Conjugation:</b>	Unconjugated
<b>Immunogen:</b>	Recombinant fusion protein corresponding to human CFP
<b>Isotype:</b>	IgG
<b>Form:</b>	Liquid
<b>Purification:</b>	Purified by affinity chromatography.
<b>Storage:</b>	Aliquot and store at -20°C. Avoid repeated freeze/thaw cycles.
<b>UniProt Primary AC:</b>	P27918 ( <a href="#">UniProt</a> , <a href="#">ExPASy</a> )
<b>Gene Symbol:</b>	CFP
<b>GeneID:</b>	<a href="#">5199</a>
<b>NCBI Accession:</b>	NP_001138724.1
<b>KEGG:</b>	hsa:5199
<b>String:</b>	<a href="#">9606.ENSP00000247153</a>
<b>Molecular Weight:</b>	Calculated MW: 51 kDa Observed MW: 50 kDa

# Datasheet

Version: 4.0.0

Revision date: 28 Aug 2025



**Buffer:** PBS, pH 7.3, containing 0.01% thiomersal, 50% glycerol.

**Concentration:** 1 mg/ml

**Note:** THIS PRODUCT IS FOR RESEARCH USE ONLY. NOT FOR USE IN DIAGNOSTIC, THERAPEUTIC OR COSMETIC PROCEDURES. NOT FOR HUMAN OR ANIMAL CONSUMPTION.

For Reference Only