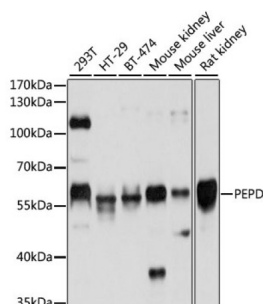


Peptidase D (PEPD) Antibody

Catalogue No.: abx004149



Western blot analysis of various lysates using PEPD Antibody at 1/1000 dilution. Secondary antibody: HRP-conjugated Goat anti-Rabbit IgG (H+L) at 1/10000 dilution. Lysates/proteins: 25 µg per lane. Blocking buffer: 3% nonfat dry milk in TBST. Exposure time: 3s.

PEPD Antibody is a Rabbit Polyclonal antibody against PEPD. This gene encodes a member of the peptidase family. The protein forms a homodimer that hydrolyzes dipeptides or tripeptides with C-terminal proline or hydroxyproline residues. The enzyme serves an important role in the recycling of proline, and may be rate limiting for the production of collagen. Mutations in this gene result in prolidase deficiency, which is characterized by the excretion of large amount of di- and tri-peptides containing proline. Multiple transcript variants encoding different isoforms have been found for this gene.

Target:	Peptidase D (PEPD)
Clonality:	Polyclonal
Reactivity:	Human, Mouse, Rat
Tested Applications:	ELISA, WB
Host:	Rabbit
Recommended dilutions:	ELISA: 1 µg/ml, WB: 1/500 - 1/2000. Optimal dilutions/concentrations should be determined by the end user.
Conjugation:	Unconjugated
Immunogen:	Recombinant protein corresponding to PEPD. The exact sequence is proprietary.
Isotype:	IgG
Form:	Liquid
Purification:	Purified by affinity chromatography.
Storage:	Aliquot and store at -20°C. Avoid repeated freeze/thaw cycles.
UniProt Primary AC:	P12955 (UniProt , ExPASy)

Datasheet

Version: 3.0.0
Revision date: 14 Oct 2025



Gene Symbol: PEPD

GeneID: [5184](#)

NCBI Accession: NP_000276.2

KEGG: hsa:5184

String: [9606.ENSP00000244137](#)

Molecular Weight: Calculated MW: 54 kDa
Observed MW: 54 kDa

Buffer: PBS, pH 7.3, containing 0.01% thimerosal, 50% glycerol.

Concentration: > 0.2 mg/ml

Note: THIS PRODUCT IS FOR RESEARCH USE ONLY. NOT FOR USE IN DIAGNOSTIC, THERAPEUTIC OR COSMETIC PROCEDURES. NOT FOR HUMAN OR ANIMAL CONSUMPTION.

For Reference Only