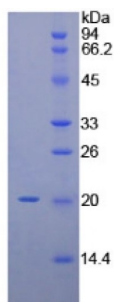


Rat Early Activation Antigen CD69 (CD69) Protein

Catalogue No.: abx066167



SDS-PAGE analysis of Rat CLEC2C Protein.

Rat C-Type Lectin Domain Family 2, Member C (CLEC2C) is a recombinant Rat protein produced in a Prokaryotic expression system (E. coli).

This protein is the immunogen for the following antibodies: [abx104151](#), [abx270029](#), [abx270559](#), [abx274318](#)

Target: Early Activation Antigen CD69 (CD69)

Origin: Rat

Expression: Recombinant

Tested Applications: WB, SDS-PAGE

Host: E. coli

Conjugation: Unconjugated

Form: Lyophilized

Activity: Not tested

Purity: > 95%

Reconstitution: To keep the original salt concentration, we recommend reconstituting to the original concentration prior to lyophilization (see Concentration) in ddH₂O. If a lower concentration is required, dilute in 20 mM Tris, 150 mM NaCl, pH 8.0. If a higher concentration is required, the product can be reconstituted directly in 20 mM Tris, 150 mM NaCl, pH 8.0, though please note that this will change the overall salt concentration. The stock concentration should be between 0.1-1.0 mg/ml. Do not vortex.

Storage: Store at 2-8°C for up to one month. For long-term storage, store at -80°C. Avoid repeated freeze/thaw cycles.

UniProt Primary AC: Q5M851 ([UniProt](#), [ExPASy](#))

Datasheet

Version: 2.0.0
Revision date: 05 Oct 2025



String: [10116.ENSRNOP00000010422](#)

Molecular Weight: Calculated MW: 19.9 kDa
Observed MW (SDS-PAGE): 20 kDa

Sequence Fragment: Cys43-Glu187

Sequence: CAVLVVVL ITSIIALFA LSVGKYNCPG FYENLESFDH HAASCKNEW F SYNGKCYFFS
TTT KTWALA Q KSCSEDDATL AVIDSEKDMA FLKRYAGGLK HWIGLRNEAS QTWKWANGKE
FNSWFNVTGS KKC VSLNHTD VASVDCE

Tag: N-terminal His tag

Buffer: Prior to lyophilization: 20 mM Tris, 150 mM NaCl, pH 8.0, containing 1 mM EDTA, 1 mM DTT, 0.01% Sarcosyl, 5% Trehalose and Proclin-300.

Concentration: Prior to lyophilization: 200 µg/ml

Note: THIS PRODUCT IS FOR RESEARCH USE ONLY. NOT FOR USE IN DIAGNOSTIC, THERAPEUTIC OR COSMETIC PROCEDURES. NOT FOR HUMAN OR ANIMAL CONSUMPTION.

For Reference Only