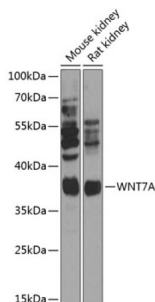


## Protein Wnt-7a (WNT7A) Antibody

Catalogue No.: abx004155



Western blot analysis of extracts of various cell lines using WNT7A Antibody (1/1000 dilution).

WNT7A Antibody is a Rabbit Polyclonal antibody against WNT7A. This gene is a member of the WNT gene family, which consists of structurally related genes that encode secreted signaling proteins. These proteins have been implicated in oncogenesis and in several developmental processes, including regulation of cell fate and patterning during embryogenesis. This gene is involved in the development of the anterior-posterior axis in the female reproductive tract, and also plays a critical role in uterine smooth muscle patterning and maintenance of adult uterine function. Mutations in this gene are associated with Fuhrmann and Al-Awadi/Raas-Rothschild/Schinzel phocomelia syndromes.

**Target:** Protein Wnt-7a (WNT7A)

**Clonality:** Polyclonal

**Reactivity:** Mouse, Rat

**Tested Applications:** WB

**Host:** Rabbit

**Recommended dilutions:** WB: 1/500 - 1/2000. Optimal dilutions/concentrations should be determined by the end user.

**Conjugation:** Unconjugated

**Immunogen:** Recombinant fusion protein corresponding to human WNT7A

**Isotype:** IgG

**Form:** Liquid

**Purification:** Purified by affinity chromatography.

**Storage:** Aliquot and store at -20°C. Avoid repeated freeze/thaw cycles.

**UniProt Primary AC:** O00755 ([UniProt](#), [ExPASy](#))

# Datasheet

Version: 5.0.0

Revision date: 07 Aug 2025



**Gene Symbol:** WNT7A

**GeneID:** [7476](#)

**NCBI Accession:** NP\_004616.2

**KEGG:** hsa:7476

**String:** [9606.ENSP00000285018](#)

**Molecular Weight:** Calculated MW: 39 kDa  
Observed MW: 39 kDa

**Buffer:** PBS, pH 7.3, containing 0.02% sodium azide, 50% glycerol.

**Concentration:** 1 mg/ml

**Note:** THIS PRODUCT IS FOR RESEARCH USE ONLY. NOT FOR USE IN DIAGNOSTIC, THERAPEUTIC OR COSMETIC PROCEDURES. NOT FOR HUMAN OR ANIMAL CONSUMPTION.

For Reference Only