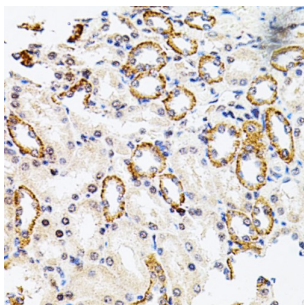
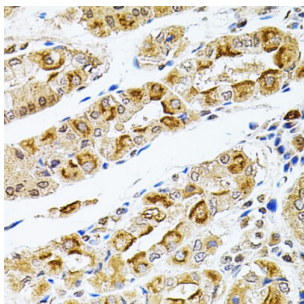


Ribosomal Protein S6 Kinase A3 (RPS6KA3) Antibody

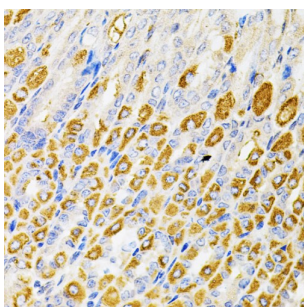
Catalogue No.: abx004162



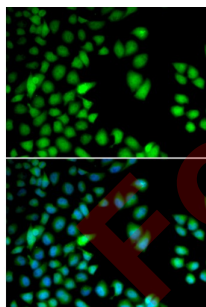
Immunohistochemistry of paraffin-embedded Rat kidney using RPS6KA3 Antibody (1/100 dilution, 40x lens).



Immunohistochemistry of paraffin-embedded Human stomach using RPS6KA3 Antibody (1/100 dilution, 40x lens).



Immunohistochemistry of paraffin-embedded Mouse stomach using RPS6KA3 Antibody (1/100 dilution, 40x lens).



Immunofluorescence analysis of HeLa cells using RPS6KA3 Antibody

RPS6KA3 Antibody is a Rabbit Polyclonal antibody against RPS6KA3. This gene encodes a member of the RSK (ribosomal S6 kinase) family of serine/threonine kinases. This kinase contains 2 non-identical kinase catalytic domains and phosphorylates various substrates, including members of the mitogen-activated kinase (MAPK) signalling pathway. The activity of this protein has been implicated in controlling cell growth and differentiation. Mutations in this gene have been associated with Coffin-Lowry syndrome (CLS).

Target:

Ribosomal Protein S6 Kinase A3 (RPS6KA3)

Datasheet

Version: 5.0.0
Revision date: 03 Oct 2025



Clonality:	Polyclonal
Reactivity:	Human, Mouse, Rat
Tested Applications:	IHC, IF/ICC
Host:	Rabbit
Recommended dilutions:	IHC-P: 1/50 - 1/200, IF/ICC: 1/20 - 1/50. Not tested in IHC-F. Optimal dilutions/concentrations should be determined by the end user.
Conjugation:	Unconjugated
Immunogen:	Recombinant fusion protein corresponding to human RPS6KA3
Isotype:	IgG
Form:	Liquid
Purification:	Purified by affinity chromatography.
Storage:	Aliquot and store at -20°C. Avoid repeated freeze/thaw cycles.
UniProt Primary AC:	P51812 (UniProt , ExPASy)
Gene Symbol:	RPS6KA3
GeneID:	6197
NCBI Accession:	NP_004577.1
KEGG:	hsa:6197
String:	9606.ENSP00000368884
Buffer:	PBS, pH 7.3, containing 0.02% sodium azide, 50% glycerol.
Concentration:	1 mg/ml
Note:	THIS PRODUCT IS FOR RESEARCH USE ONLY. NOT FOR USE IN DIAGNOSTIC, THERAPEUTIC OR COSMETIC PROCEDURES. NOT FOR HUMAN OR ANIMAL CONSUMPTION.