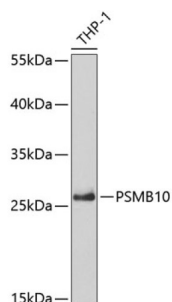
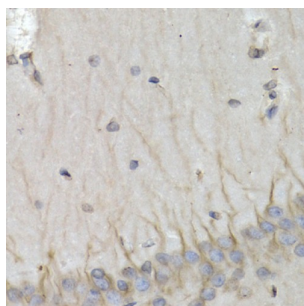


## Proteasome Subunit Beta Type 10 (PSMB10) Antibody

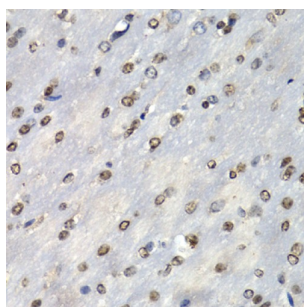
Catalogue No.: abx004174



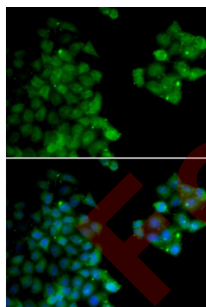
Western blot analysis of extracts of THP-1 cells using PSMB10 Antibody (1/50 dilution)00.



Immunohistochemistry of paraffin-embedded Rat brain using PSMB10 Antibody (1/200 dilution, 40x lens).



Immunohistochemistry of paraffin-embedded Mouse brain using PSMB10 Antibody (1/200 dilution, 40x lens).



Immunofluorescence analysis of HeLa cells using PSMB10 Antibody

PSMB10 Antibody is a Rabbit Polyclonal antibody against PSMB10. The proteasome is a multicatalytic proteinase complex with a highly ordered ring-shaped 20S core structure. The core structure is composed of 4 rings of 28 non-identical subunits; 2 rings are composed of 7 alpha subunits and 2 rings are composed of 7 beta subunits. Proteasomes are distributed throughout eukaryotic cells at a high concentration and cleave peptides in an ATP/ubiquitin-dependent process in a non-lysosomal pathway. An essential function of a modified proteasome, the immunoproteasome, is the processing of class I MHC peptides. This gene encodes a member of the proteasome B-type family, also known as the T1B family, that is a 20S core beta subunit. Proteolytic processing is required to generate a mature subunit. Expression of this gene is induced by gamma interferon, and this gene product replaces catalytic subunit 2 (proteasome beta 7 subunit) in the immunoproteasome.

# Datasheet

Version: 6.0.0  
Revision date: 14 Oct 2025



<b>Target:</b>	Proteasome Subunit Beta Type 10 (PSMB10)
<b>Clonality:</b>	Polyclonal
<b>Reactivity:</b>	Human, Mouse, Rat
<b>Tested Applications:</b>	WB, IHC, IF/ICC
<b>Host:</b>	Rabbit
<b>Recommended dilutions:</b>	WB: 1/500 - 1/2000, IHC-P: 1/50 - 1/200, IF/ICC: 1/50 - 1/100. Not tested in IHC-F. Optimal dilutions/concentrations should be determined by the end user.
<b>Conjugation:</b>	Unconjugated
<b>Immunogen:</b>	Recombinant fusion protein corresponding to human PSMB10
<b>Isotype:</b>	IgG
<b>Form:</b>	Liquid
<b>Purification:</b>	Purified by affinity chromatography.
<b>Storage:</b>	Aliquot and store at -20°C. Avoid repeated freeze/thaw cycles.
<b>UniProt Primary AC:</b>	P40306 ( <a href="#">UniProt</a> , <a href="#">ExPASy</a> )
<b>Gene Symbol:</b>	PSMB10
<b>GeneID:</b>	<a href="#">5699</a>
<b>NCBI Accession:</b>	NP_002792.1
<b>KEGG:</b>	hsa:5699
<b>String:</b>	<a href="#">9606.ENSP00000351314</a>
<b>Molecular Weight:</b>	Calculated MW: 28 kDa Observed MW: 29 kDa
<b>Buffer:</b>	PBS, pH 7.3, containing 0.02% sodium azide, 50% glycerol.
<b>Concentration:</b>	1 mg/ml

# Datasheet

Version: 6.0.0

Revision date: 14 Oct 2025



**Note:**

THIS PRODUCT IS FOR RESEARCH USE ONLY. NOT FOR USE IN DIAGNOSTIC, THERAPEUTIC OR COSMETIC PROCEDURES. NOT FOR HUMAN OR ANIMAL CONSUMPTION.

For Reference Only