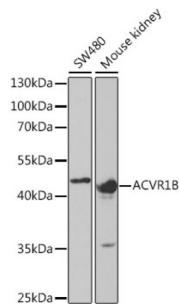


## Activin A Receptor Type 1B (ACVR1B) Antibody

Catalogue No.: abx004175



Western blot analysis of extracts of various cell lines using ACVR1B Antibody (1/1000 dilution).

ACVR1B Antibody is a Rabbit Polyclonal antibody against ACVR1B. This gene encodes an activin A type IB receptor. Activins are dimeric growth and differentiation factors which belong to the transforming growth factor-beta (TGF-beta) superfamily of structurally related signaling proteins. Activins signal through a heteromeric complex of receptor serine kinases which include at least two type I and two type II receptors. This protein is a type I receptor which is essential for signaling. Mutations in this gene are associated with pituitary tumors. Alternate splicing results in multiple transcript variants.

**Target:** Activin A Receptor Type 1B (ACVR1B)

**Clonality:** Polyclonal

**Reactivity:** Human, Mouse

**Tested Applications:** WB

**Host:** Rabbit

**Recommended dilutions:** WB: 1/500 - 1/2000. Optimal dilutions/concentrations should be determined by the end user.

**Conjugation:** Unconjugated

**Immunogen:** Recombinant fusion protein corresponding to human ACVR1B

**Isotype:** IgG

**Form:** Liquid

**Purification:** Purified by affinity chromatography.

**Storage:** Aliquot and store at -20°C. Avoid repeated freeze/thaw cycles.

**UniProt Primary AC:** P36896 ([UniProt](#), [ExPASy](#))

# Datasheet

Version: 4.0.0

Revision date: 20 May 2025



**Gene Symbol:** ACVR1B

**GeneID:** [91](#)

**NCBI Accession:** NP\_004293.1

**KEGG:** hsa:91

**String:** [9606.ENSP00000442656](#)

**Molecular Weight:** Calculated MW: 51 kDa/53 kDa/54 kDa/56 kDa/61 kDa  
Observed MW: 49 kDa

**Buffer:** PBS, pH 7.3, containing 0.02% sodium azide, 50% glycerol.

**Concentration:** 1 mg/ml

**Note:** THIS PRODUCT IS FOR RESEARCH USE ONLY. NOT FOR USE IN DIAGNOSTIC, THERAPEUTIC OR COSMETIC PROCEDURES. NOT FOR HUMAN OR ANIMAL CONSUMPTION.

For Reference Only