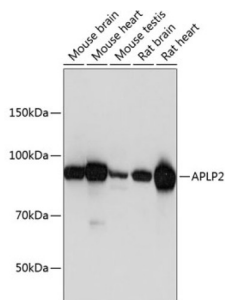


Amyloid Beta Precursor Like Protein 2 (APLP2) Antibody

Catalogue No.: abx004176



Western blot analysis of extracts of various cell lines using APLP2 Antibody (1/1000 dilution).

APLP2 Antibody is a Rabbit Polyclonal antibody against APLP2. This gene encodes amyloid precursor- like protein 2 (APLP2), which is a member of the APP (amyloid precursor protein) family including APP, APLP1 and APLP2. This protein is ubiquitously expressed. It contains heparin-, copper- and zinc- binding domains at the N-terminus, BPTI/Kunitz inhibitor and E2 domains in the middle region, and transmembrane and intracellular domains at the C-terminus. This protein interacts with major histocompatibility complex (MHC) class I molecules. The synergy of this protein and the APP is required to mediate neuromuscular transmission, spatial learning and synaptic plasticity. This protein has been implicated in the pathogenesis of Alzheimer's disease. Multiple alternatively spliced transcript variants encoding different isoforms have been identified.

Target: Amyloid Beta Precursor Like Protein 2 (APLP2)

Clonality: Polyclonal

Reactivity: Human, Mouse, Rat

Tested Applications: WB

Host: Rabbit

Recommended dilutions: WB: 1/500 - 1/2000. Optimal dilutions/concentrations should be determined by the end user.

Conjugation: Unconjugated

Immunogen: Recombinant fusion protein corresponding to human APLP2

Isotype: IgG

Form: Liquid

Purification: Purified by affinity chromatography.

Storage: Aliquot and store at -20°C. Avoid repeated freeze/thaw cycles.

UniProt Primary AC: Q06481 ([UniProt](#), [ExPASy](#))

Datasheet

Version: 4.0.0
Revision date: 13 Jun 2025



Gene Symbol: APLP2

GeneID: [334](#)

NCBI Accession: NP_001633.1

KEGG: hsa:334

String: [9606.ENSP00000263574](#)

Molecular Weight: Calculated MW: 59 kDa/79 kDa/80 kDa/85 kDa/86 kDa/87 kDa
Observed MW: 87 kDa

Buffer: PBS, pH 7.3, containing 0.02% sodium azide, 50% glycerol.

Concentration: 1 mg/ml

Note: THIS PRODUCT IS FOR RESEARCH USE ONLY. NOT FOR USE IN DIAGNOSTIC, THERAPEUTIC OR COSMETIC PROCEDURES. NOT FOR HUMAN OR ANIMAL CONSUMPTION.

For Reference Only