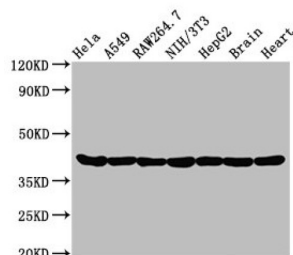
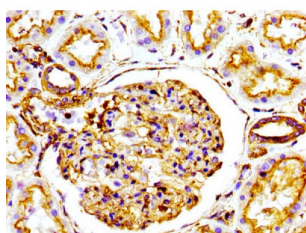


Actin (ACTA1) Antibody

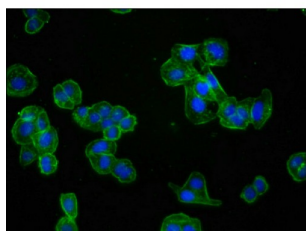
Catalogue No.: abx242958



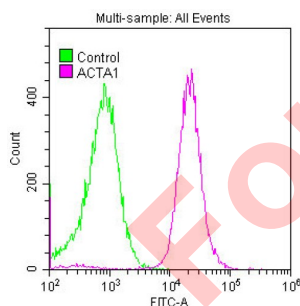
WB analysis of HeLa, A549, Raw264.7, NIH/3T3, HepG2 whole cell lysates, and Rat Brain and Rat Heart tissues, using Actin antibody (0.95 µg/ml). Predicted band size: 42 kDa and Observed band size: 42 kDa.



IHC-P analysis of human kidney tissue, using Actin antibody (1/100 dilution).



IF analysis of HepG2 cells using Actin antibody (1/60 dilution), counter-stained with DAPI. The cells were fixed in 4% formaldehyde, permeabilized using 0.2% Triton X-100 and blocked in 10% normal Goat Serum. The cells were then incubated with the antibody overnight at 4°C. The secondary antibody was AF488-conjugated Goat Anti-Rabbit IgG (H+L).



Flow cytometric analysis of HeLa cells, using Actin antibody (red line, 1/50 dilution). The cells were fixed with 70% Ethylalcohol (18 h) and then permeabilized with 0.3% Triton X-100 for 2 min. The cells were then incubated in 1x PBS /10% normal goat serum to block non-specific protein-protein interactions followed by primary antibody for 1 h at 4 °C. The secondary antibody used was FITC goat anti-rabbit IgG (H+L) (1/200 dilution) for 1 h at 4 °C. Control antibody (green line) was used under the same conditions. Acquisition of >10,000 events was performed.

Actin (ACTA1) Antibody is a Monoclonal Antibody against Actin (ACTA1).

Target: Actin (ACTA1)

Clonality: Monoclonal

Reactivity: Human

Datasheet

Version: 3.0.0
Revision date: 03 Apr 2025



Expression:	Recombinant
Tested Applications:	ELISA, WB, IHC, IF/ICC, FCM
Host:	Rabbit
Recommended dilutions:	WB: 1/500 - 1/5000, IHC: 1/50 - 1/500, IF/ICC: 1/30 - 1/200. Optimal dilutions/concentrations should be determined by the end user.
Conjugation:	Unconjugated
Immunogen:	A synthesized peptide.
Isotype:	IgG
Form:	Liquid
Purification:	Purified by affinity chromatography.
Storage:	Aliquot and store at -20°C. Avoid repeated freeze/thaw cycles.
UniProt Primary AC:	P68133 (UniProt , ExPASy)
Gene Symbol:	ACTA1
GeneID:	58
KEGG:	has:58
Buffer:	PBS, pH 7.4, 150 mM NaCl, 0.02% sodium azide and 50% glycerol.
Concentration:	0.8 mg/ml
Note:	THIS PRODUCT IS FOR RESEARCH USE ONLY. NOT FOR USE IN DIAGNOSTIC, THERAPEUTIC OR COSMETIC PROCEDURES. NOT FOR HUMAN OR ANIMAL CONSUMPTION.