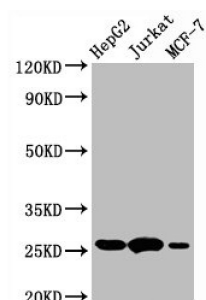


## Apoptosis Regulator Bcl-2 (BCL2) Antibody

Catalogue No.: abx242957



### Western Blot

Positive WB detected in: HepG2 whole cell lysate, Jurkat whole cell lysate, MCF-7 whole cell lysate

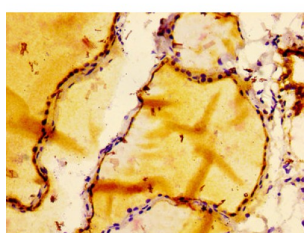
All lanes: BCL2 antibody at 1 µg/ml

### Secondary

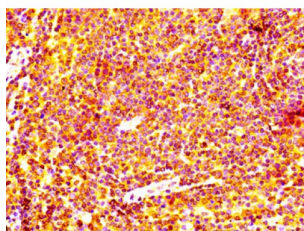
Goat polyclonal to rabbit IgG at 1/50000 dilution

Predicted band size: 26 KDa

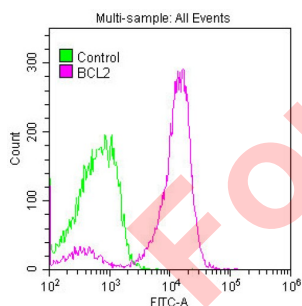
Observed band size: 26 KDa



Immunohistochemistry analysis of BCL2 Antibody diluted at 1/100 and staining in paraffin-embedded human thyroid tissue. After dewaxing and hydration, antigen retrieval was mediated by high pressure in a citrate buffer (pH 6.0). Section was blocked with 10% normal goat serum 30min at RT. Then primary antibody (1% BSA) was incubated at 4°C overnight. The primary is detected by a biotinylated secondary antibody and visualized using an HRP conjugated SP system.



Immunohistochemistry analysis of BCL2 Antibody diluted at 1/100 and staining in paraffin-embedded human lymph node tissue. After dewaxing and hydration, antigen retrieval was mediated by high pressure in a citrate buffer (pH 6.0). Section was blocked with 10% normal goat serum 30min at RT. Then primary antibody (1% BSA) was incubated at 4°C overnight. The primary is detected by a biotinylated secondary antibody and visualized using an HRP conjugated SP system.



Overlay histogram showing Jurkat cells stained with BCL2 Antibody (red line) at 1/50. The cells were fixed with 70% Ethylalcohol (18h) and then permeabilized with 0.3% Triton X-100 for 2 min. The cells were then incubated in 1x PBS /10% normal goat serum to block non-specific protein-protein interactions followed by primary antibody for 1 h at 4°C. The secondary antibody used was FITC goat anti-rabbit IgG (H+L) at 1/200 dilution for 1 h at 4°C. Control antibody (green line) was used under the same conditions. Acquisition of >10,000 events was performed.

BCL2 Antibody is a Monoclonal Antibody against BCL2.

**Target:** Apoptosis Regulator Bcl-2 (BCL2)

**Clonality:** Monoclonal

**Reactivity:** Human, Mouse, Rat

# Datasheet

Version: 1.0.0  
Revision date: 06 Jul 2025



**Tested Applications:** ELISA, WB, IHC, FCM

**Host:** Rabbit

**Recommended dilutions:** WB: 1/500 - 1/5000, IHC: 1/50 - 1/500. Optimal dilutions/concentrations should be determined by the end user.

**Conjugation:** Unconjugated

**Immunogen:** A synthesized peptide

**Isotype:** IgG

**Form:** Liquid

**Purification:** Purified by affinity chromatography.

**Storage:** Aliquot and store at -20°C. Avoid repeated freeze/thaw cycles.

**UniProt Primary AC:** P10415 ([UniProt](#), [ExPASy](#)) P10417 ([UniProt](#), [ExPASy](#)) P49950 ([UniProt](#), [ExPASy](#))

**Gene Symbol:** BCL2

**GeneID:** [596](#) [12043](#) [24224](#)

**OMIM:** [151430](#)

**HGNC:** 990

**KEGG:** hsa:596

**Ensembl:** ENSG00000171791

**String:** [9606.ENSP00000381185](#)

**Buffer:** PBS, pH 7.4, 150 mM NaCl, 0.02% sodium azide and 50% glycerol.

**Note:** THIS PRODUCT IS FOR RESEARCH USE ONLY. NOT FOR USE IN DIAGNOSTIC, THERAPEUTIC OR COSMETIC PROCEDURES. NOT FOR HUMAN OR ANIMAL CONSUMPTION.