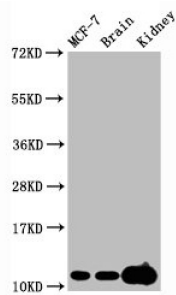


Tri-methyl-Histone H4 (K20) Antibody

Catalogue No.: abx242935

**Western Blot**

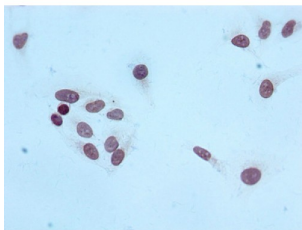
Positive WB detected in: MCF-7 whole cell lysate, Mouse brain tissue, Mouse kidney tissue
All lanes: Tri-methyl-Histone H4 (K20) antibody at 2.15 µg/ml

Secondary

Goat polyclonal to rabbit IgG at 1/50000 dilution

Predicted band size: 11 KDa

Observed band size: 11 KDa



Immunocytochemistry analysis of Tri-methyl-Histone H4 (K20) Antibody diluted at 1/100 and staining in Hela cells. After dewaxing and hydration, antigen retrieval was mediated by high pressure in a citrate buffer (pH 6.0). Section was blocked with 10% normal goat serum 30min at RT. Then primary antibody (1% BSA) was incubated at 4°C overnight. The primary is detected by a biotinylated secondary antibody and visualized using an HRP conjugated SP system.

Tri-methyl-Histone H4 (K20) Antibody is a Monoclonal Antibody against Tri-methyl-Histone H4 (K20).

Target:	Tri-methyl-Histone H4 (K20)
Clonality:	Monoclonal
Reactivity:	Human
Tested Applications:	ELISA, WB, IF/ICC
Host:	Rabbit
Recommended dilutions:	WB: 1/500 - 1/5000, IF/ICC: 1/50 - 1/300. Optimal dilutions/concentrations should be determined by the end user.
Conjugation:	Unconjugated
Immunogen:	A synthesized peptide
Isotype:	IgG
Form:	Liquid
Purification:	Purified by affinity chromatography.

Datasheet

Version: 2.0.0

Revision date: 11 Sep 2025



Storage: Aliquot and store at -20°C. Avoid repeated freeze/thaw cycles.

UniProt Primary AC: P62805 ([UniProt](#), [ExPASy](#))

KEGG: hsa:121504, hsa:554313, hsa:8294, hsa:8359, hsa:8360, hsa:8361, hsa:8362, hsa:8363, hsa:8364, hsa:8365, hsa:8366, hsa:8367, hsa:8368, hsa:8370

String: [9606.ENSP00000484789](#)

Buffer: PBS, pH 7.4, 150 mM NaCl, 0.02% sodium azide and 50% glycerol.

Note: THIS PRODUCT IS FOR RESEARCH USE ONLY. NOT FOR USE IN DIAGNOSTIC, THERAPEUTIC OR COSMETIC PROCEDURES. NOT FOR HUMAN OR ANIMAL CONSUMPTION.

For Reference Only