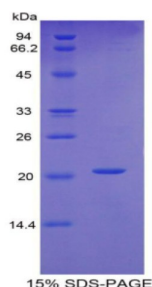
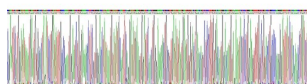


Human Fibrillin 1 (FBN1) Protein

Catalogue No.: abx066564



SDS-PAGE analysis of Human Fibrillin 1 Protein.



Gene sequencing extract of Human Fibrillin 1 Protein.

Recombinant Fibrillin 1 is a recombinant Human protein produced in a Prokaryotic expression system (E. coli).

Target: Fibrillin 1 (FBN1)

Origin: Human

Expression: Recombinant

Tested Applications: WB, SDS-PAGE

Host: E. coli

Conjugation: Unconjugated

Form: Lyophilized

Purity: > 97%

Reconstitution: To keep the original salt concentration, we recommend reconstituting to the original concentration prior to lyophilization (see Concentration) in ddH₂O. If a lower concentration is required, dilute in 20 mM Tris, 150 mM NaCl, pH 8.0. If a higher concentration is required, the product can be reconstituted directly in 20 mM Tris, 150 mM NaCl, pH 8.0, though please note that this will change the overall salt concentration. The stock concentration should be between 0.1-1.0 mg/ml. Do not vortex.

Datasheet

Version: 3.0.0
Revision date: 25 May 2025



| | |
|----------------------------|--|
| Storage: | Store at 2-8 °C for up to one month. Store at -80 °C for up to one year. Avoid repeated freeze/thaw cycles. |
| UniProt Primary AC: | P35555 (UniProt , ExPASy) |
| KEGG: | hsa:2200 |
| String: | 9606.ENSP00000325527 |
| Molecular Weight: | Calculated MW: 20.5 kDa Observed MW (SDS-PAGE): 23 kDa |
| Sequence Fragment: | Asp723-Arg902 |
| Sequence: | DINECALD PDICPNGICE NLRGTYKCIC NSGYEVDSTG KNCVDINECV LNSLLCDNGQ CRNTPGSFVC TCPKGFYKYP DLKTCEDIDE CESSPCINGV CKNSPGSFIC ECSSESTLDP TKTICIETIK GTCWQTVIDG RCEININGAT LKSQCCSSLG AAWGSPCTLG QVDPICGKGY SR |
| Tag: | N-terminal His tag |
| Buffer: | Prior to lyophilization: 20 mM Tris, 150 mM NaCl, pH 8.0, containing 0.01% Sarcosyl, 5% Trehalose. |
| Activity: | Not tested |
| Concentration: | Prior to lyophilization: 200 µg/ml |
| Note: | THIS PRODUCT IS FOR RESEARCH USE ONLY. NOT FOR USE IN DIAGNOSTIC, THERAPEUTIC OR COSMETIC PROCEDURES. NOT FOR HUMAN OR ANIMAL CONSUMPTION. |