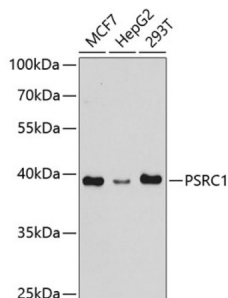


Proline/Serine Rich Coiled Coil Protein 1 (PSRC1) Antibody

Catalogue No.: abx004201



Western blot analysis of various lysates using PSRC1 Antibody at 1/1000 dilution. Secondary antibody: HRP-conjugated Goat anti-Rabbit IgG (H+L) at 1/10000 dilution. Lysates / proteins: 25 µg per lane. Blocking buffer: 3 % nonfat dry milk in TBST. Detection: ECL Basic Kit (RM00020). Exposure time: 90s.

PSRC1 Antibody is a Rabbit Polyclonal antibody against PSRC1. This gene encodes a proline-rich protein. Studies of this gene and the related mouse gene suggest that this gene is regulated by p53 and may participate in p53-mediated growth suppression. The encoded protein may function as a microtubule destabilizing protein that controls spindle dynamics and mitotic progression by recruiting and regulating microtubule depolymerases. At least one genetic variation in this gene has been associated with decreased serum levels of low-density lipoprotein cholesterol. Alternatively spliced transcript variants encoding different isoforms have been described.

Target:	Proline/Serine Rich Coiled Coil Protein 1 (PSRC1)
Clonality:	Polyclonal
Reactivity:	Human
Tested Applications:	ELISA, WB
Host:	Rabbit
Recommended dilutions:	ELISA: 1 µg/ml, WB: 1/500 - 1/1000. Optimal dilutions/concentrations should be determined by the end user.
Conjugation:	Unconjugated
Immunogen:	Recombinant fusion protein containing a sequence corresponding to amino acids 1-215 of human PSRC1.
Isotype:	IgG
Form:	Liquid
Purification:	Purified by affinity chromatography.
Storage:	Aliquot and store at -20°C. Avoid repeated freeze/thaw cycles.
UniProt Primary AC:	Q6PGN9 (UniProt , ExPASy)

Datasheet

Version: 4.0.0

Revision date: 02 May 2025



Gene Symbol: PSRC1

GeneID: [84722](#)

NCBI Accession: NP_001005290.1

KEGG: hsa:84722

String: [9606.ENSP00000358925](#)

Molecular Weight: Calculated MW: 39 kDa
Observed MW: 39 kDa

Buffer: PBS, pH 7.3, containing 0.02% sodium azide, 50% glycerol.

Concentration: > 0.2 mg/ml

Note: THIS PRODUCT IS FOR RESEARCH USE ONLY. NOT FOR USE IN DIAGNOSTIC, THERAPEUTIC OR COSMETIC PROCEDURES. NOT FOR HUMAN OR ANIMAL CONSUMPTION.

For Reference Only