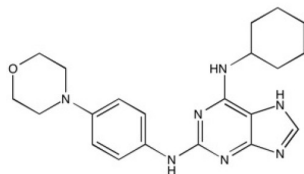


Reversine

Catalogue No.: abx076842



Reversine is a small molecule which can act as a Reverses cells to multipotent stem cells. It is provided as a powder.

This product acts on the following target types: GPCR, Kinase.

This product may be of interest in the following research areas and diseases: Stem cells.

Please note that our chemical products are for scientific research use only in a laboratory and are not for medical or veterinary use. This product can only be dispatched to a scientific business or laboratory address.

Target:	Reversine
Form:	Solid
Purity:	> 98%
Reconstitution:	Soluble in DMSO (up to 7 mg/ml).
Storage:	Store desiccated at -20 °C for up to 1 year. Solutions can be stored at -20 °C for up to 1 month.
Molecular Weight:	383.5 g/mol
Molecular Formula:	C ₂₁ H ₂₇ N ₇ O
Buffer:	Not applicable.
CAS Number:	656820-32-5
Note:	THIS PRODUCT IS FOR RESEARCH USE ONLY. NOT FOR USE IN DIAGNOSTIC, THERAPEUTIC OR COSMETIC PROCEDURES. NOT FOR HUMAN OR ANIMAL CONSUMPTION.