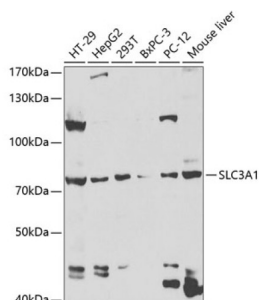
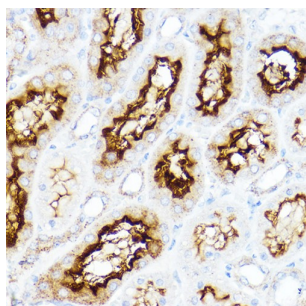


Amino Acid Transporter Heavy Chain SLC3A1 (SLC3A1) Antibody

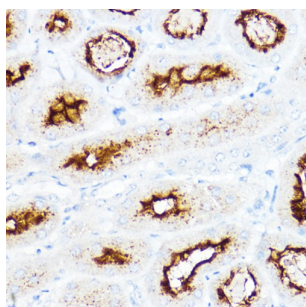
Catalogue No.: abx004215



Western blot analysis of various lysates using SLC3A1 Antibody at 1/1000 dilution. Secondary antibody: HRP-conjugated Goat anti-Rabbit IgG (H+L) at 1/10000 dilution. Lysates/proteins: 25 µg per lane. Blocking buffer: 3% nonfat dry milk in TBST. Exposure time: 90s.



Immunohistochemistry analysis of paraffin-embedded Rat kidney using SLC3A1 Antibody at dilution of 1/200 (40x lens). High pressure antigen retrieval performed in 0.01 M Citrate buffer (pH 6.0) prior to IHC staining.



Immunohistochemistry analysis of paraffin-embedded Mouse kidney using SLC3A1 Antibody at dilution of 1/200 (40x lens). High pressure antigen retrieval performed in 0.01 M Citrate buffer (pH 6.0) prior to IHC staining.

SLC3A1 Antibody is a Rabbit Polyclonal antibody against SLC3A1. This gene encodes a type II membrane glycoprotein which is one of the components of the renal amino acid transporter which transports neutral and basic amino acids in the renal tubule and intestinal tract. Mutations and deletions in this gene are associated with cystinuria. Alternatively spliced transcript variants have been described, but their biological validity has not been determined.

Target: Amino Acid Transporter Heavy Chain SLC3A1 (SLC3A1)

Clonality: Polyclonal

Reactivity: Human, Mouse, Rat

Tested Applications: ELISA, WB, IHC

Host: Rabbit

Recommended dilutions: ELISA: 1 µg/ml, WB: 1/500 - 1/2000, IHC-P: 1/50 - 1/200. Not tested in IHC-F. Optimal dilutions/concentrations should be determined by the end user.

Datasheet

Version: 5.0.0
Revision date: 25 Sep 2025



Conjugation:	Unconjugated
Immunogen:	Recombinant fusion protein containing a sequence corresponding to amino acids 416-685 of human SLC3A1.
Isotype:	IgG
Form:	Liquid
Purification:	Purified by affinity chromatography.
Storage:	Aliquot and store at -20°C. Avoid repeated freeze/thaw cycles.
UniProt Primary AC:	Q07837 (UniProt , ExPASy)
Gene Symbol:	SLC3A1
GeneID:	6519
OMIM:	104614
NCBI Accession:	NP_000332.2
HGNC:	11025
KEGG:	hsa:6519
Ensembl:	ENSG00000138079
String:	9606.ENSP00000260649
Molecular Weight:	Calculated MW: 79 kDa Observed MW: 79 kDa
Buffer:	PBS, pH 7.3, containing 0.02% sodium azide, 50% glycerol.
Concentration:	> 0.2 mg/ml
Note:	THIS PRODUCT IS FOR RESEARCH USE ONLY. NOT FOR USE IN DIAGNOSTIC, THERAPEUTIC OR COSMETIC PROCEDURES. NOT FOR HUMAN OR ANIMAL CONSUMPTION.