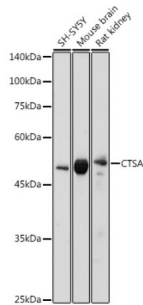


Cathepsin A (CTSA) Antibody

Catalogue No.: abx004218



Western blot analysis of extracts of various cell lines using CTSA Antibody (1/1000 dilution).

CTSA Antibody is a Rabbit Polyclonal antibody against CTSA. This gene encodes a glycoprotein which associates with lysosomal enzymes beta-galactosidase and neuraminidase to form a complex of high molecular weight multimers. The formation of this complex provides a protective role for stability and activity. Deficiencies in this gene are linked to multiple forms of galactosialidosis. Alternatively spliced transcript variants encoding different isoforms have been found for this gene.

Target: Cathepsin A (CTSA)

Clonality: Polyclonal

Reactivity: Human, Mouse, Rat

Tested Applications: WB

Host: Rabbit

Recommended dilutions: WB: 1/500 - 1/2000. Optimal dilutions/concentrations should be determined by the end user.

Conjugation: Unconjugated

Immunogen: Recombinant fusion protein corresponding to human CTSA

Isotype: IgG

Form: Liquid

Purification: Purified by affinity chromatography.

Storage: Aliquot and store at -20°C. Avoid repeated freeze/thaw cycles.

UniProt Primary AC: P10619 ([UniProt](#), [ExPASy](#))

Gene Symbol: CTSA

Datasheet

Version: 5.0.0
Revision date: 12 Jun 2025



GeneID: [5476](#)

NCBI Accession: NP_001121167.1

KEGG: hsa:5476

String: [9606.ENSP00000361562](#)

Molecular Weight: Calculated MW: 52 kDa/54 kDa
Observed MW: 54 kDa

Buffer: PBS, pH 7.3, containing 0.01% thiomersal, 50% glycerol.

Concentration: 1 mg/ml

Note: THIS PRODUCT IS FOR RESEARCH USE ONLY. NOT FOR USE IN DIAGNOSTIC, THERAPEUTIC OR COSMETIC PROCEDURES. NOT FOR HUMAN OR ANIMAL CONSUMPTION.

For Reference Only