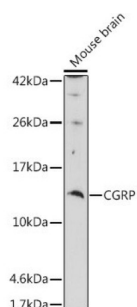
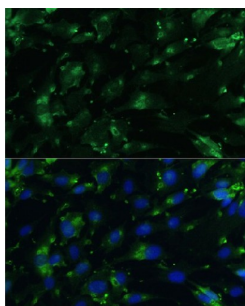


## Calcitonin (CALCA) Antibody

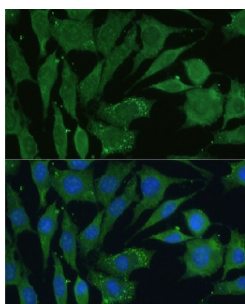
Catalogue No.: abx004242



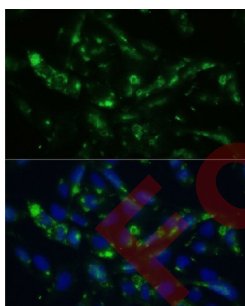
Western blot analysis of extracts of Mouse brain using CGRP Antibody (1/1000 dilution).



Immunofluorescence analysis of C6 cells using CGRP Antibody (1/100 dilution). Blue: DAPI for nuclear staining.



Immunofluorescence analysis of L929 cells using CGRP Antibody (1/100 dilution). Blue: DAPI for nuclear staining.



Immunofluorescence analysis of U2OS cells using CGRP Antibody (1/100 dilution). Blue: DAPI for nuclear staining.

Calcitonin Antibody is a Rabbit Polyclonal antibody against Calcitonin. This gene encodes the peptide hormones calcitonin, calcitonin gene-related peptide and katacalcin by tissue-specific alternative RNA splicing of the gene transcripts and cleavage of inactive precursor proteins. Calcitonin is involved in calcium regulation and acts to regulate phosphorus metabolism. Calcitonin gene-related peptide functions as a vasodilator while katacalcin is a calcium-lowering peptide. Multiple transcript variants encoding different isoforms have been found for this gene.

**Target:** Calcitonin (CALCA)

# Datasheet

Version: 3.0.0  
Revision date: 06 Jun 2025



<b>Clonality:</b>	Polyclonal
<b>Reactivity:</b>	Human, Mouse, Rat
<b>Tested Applications:</b>	WB, IF/ICC
<b>Host:</b>	Rabbit
<b>Recommended dilutions:</b>	WB: 1/500 - 1/2000, IF/ICC: 1/50 - 1/200. Optimal dilutions/concentrations should be determined by the end user.
<b>Conjugation:</b>	Unconjugated
<b>Immunogen:</b>	A synthetic peptide corresponding to human CGRP
<b>Isotype:</b>	IgG
<b>Form:</b>	Liquid
<b>Purification:</b>	Purified by affinity chromatography.
<b>Storage:</b>	Aliquot and store at -20°C. Avoid repeated freeze/thaw cycles.
<b>UniProt Primary AC:</b>	P06881 ( <a href="#">UniProt</a> , <a href="#">ExPASy</a> )
<b>Gene Symbol:</b>	CALCA
<b>GeneID:</b>	<a href="#">796</a>
<b>NCBI Accession:</b>	NP_001029125.1
<b>Molecular Weight:</b>	Calculated MW: 13 kDa/15 kDa Observed MW: 14 kDa
<b>Buffer:</b>	PBS, pH 7.3, containing 0.05% Proclin-300, 50% glycerol.
<b>Concentration:</b>	1 mg/ml
<b>Note:</b>	THIS PRODUCT IS FOR RESEARCH USE ONLY. NOT FOR USE IN DIAGNOSTIC, THERAPEUTIC OR COSMETIC PROCEDURES. NOT FOR HUMAN OR ANIMAL CONSUMPTION.