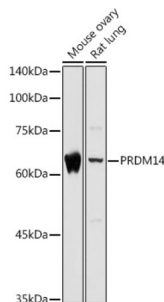
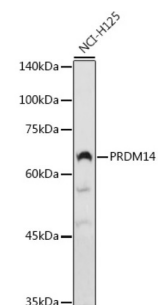


PR/SET Domain 14 (PRDM14) Antibody

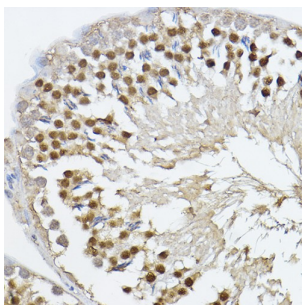
Catalogue No.: abx004243



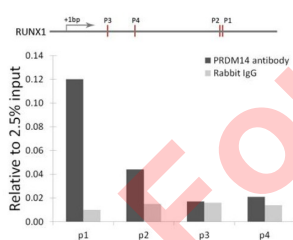
Western blot analysis of various lysates using PRDM14 Antibody at 1/1000 dilution. Secondary antibody: HRP-conjugated Goat anti-Rabbit IgG (H+L) at 1/10000 dilution. Lysates/proteins: 25 µg per lane. Blocking buffer: 3% nonfat dry milk in TBST. Exposure time: 5s.



Western blot analysis of lysates from NCI-H125 cells, using PRDM14 Antibody at 1/1000 dilution. Secondary antibody: HRP-conjugated Goat anti-Rabbit IgG (H+L) at 1/10000 dilution. Lysates/proteins: 25 µg per lane. Blocking buffer: 3% nonfat dry milk in TBST. Exposure time: 90s.



Immunohistochemistry analysis of paraffin-embedded Rat testis using PRDM14 Antibody at dilution of 1/100 (40x lens). High pressure antigen retrieval performed in 0.01 M Citrate buffer (pH 6.0) prior to IHC staining.



Chromatin immunoprecipitation analysis of RUNX1 gene from 293 cell line, using PRDM14 antibody and rabbit IgG. P1, P2, P3 and P4 were four probes located on RUNX1 gene as the schematic diagram illustrated. The amount of immunoprecipitated DNA was checked by quantitative PCR. Histogram was constructed by the ratios of the immunoprecipitated DNA to the input.

PRDM14 Antibody is a Rabbit Polyclonal antibody against PRDM14. This gene encodes a member of the PRDI-BF1 and RIZ homology domain containing (PRDM) family of transcriptional regulators. The encoded protein may possess histone methyltransferase activity and plays a critical role in cell pluripotency by suppressing the expression of differentiation marker genes. Expression of this gene may play a role in breast cancer.

Target: PR/SET Domain 14 (PRDM14)

Clonality: Polyclonal

Datasheet

Version: 2.0.0
Revision date: 05 Oct 2025



Reactivity:	Human, Mouse, Rat
Tested Applications:	ELISA, WB, IHC, ChIP
Host:	Rabbit
Recommended dilutions:	ELISA: 1 µg/ml, WB: 1/500 - 1/1000, IHC-P: 1/50 - 1/200, ChIP: 5 µg antibody per 10 µg - 15 µg of Chromatin. Not tested in IHC-F. Optimal dilutions/concentrations should be determined by the end user.
Conjugation:	Unconjugated
Immunogen:	Recombinant protein corresponding to PRDM14. The exact sequence is proprietary.
Isotype:	IgG
Form:	Liquid
Purification:	Purified by affinity chromatography.
Storage:	Aliquot and store at -20°C. Avoid repeated freeze/thaw cycles.
UniProt Primary AC:	Q9GZV8 (UniProt , ExPASy)
Gene Symbol:	PRDM14
GeneID:	63978
NCBI Accession:	NP_078780.1
String:	9606.ENSP00000276594
Molecular Weight:	Calculated MW: 64 kDa Observed MW: 70 kDa
Buffer:	PBS, pH 7.3, containing 0.09% sodium azide, 50% glycerol.
Concentration:	> 0.2 mg/ml
Note:	THIS PRODUCT IS FOR RESEARCH USE ONLY. NOT FOR USE IN DIAGNOSTIC, THERAPEUTIC OR COSMETIC PROCEDURES. NOT FOR HUMAN OR ANIMAL CONSUMPTION.