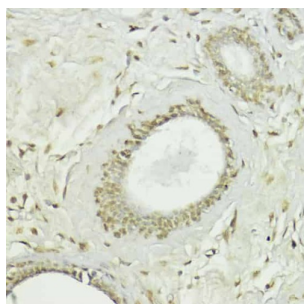
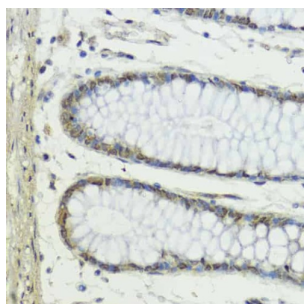


## Snail Family Transcriptional Repressor 1 / SNAIL (SNAI1) Antibody

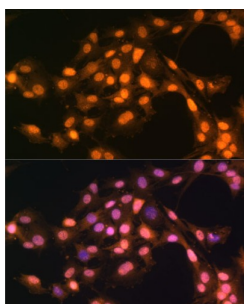
Catalogue No.: abx004244



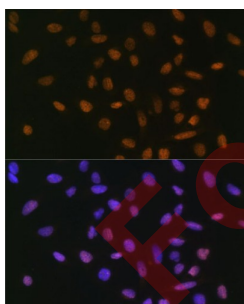
Immunohistochemistry of paraffin-embedded Human breast using Snail Antibody (1/100 dilution, 40x lens).



Immunohistochemistry of paraffin-embedded Human colon using Snail Antibody (1/100 dilution, 40x lens).



Immunofluorescence analysis of C6 cells using Snail Antibody (1/100 dilution). Blue: DAPI for nuclear staining.



Immunofluorescence analysis of U-2 OS cells using Snail Antibody (1/100 dilution). Blue: DAPI for nuclear staining.

SNAIL Antibody is a Rabbit Polyclonal antibody against SNAIL. The Drosophila embryonic protein SNAIL is a zinc finger transcriptional repressor which downregulates the expression of ectodermal genes within the mesoderm. The nuclear protein encoded by this gene is structurally similar to the Drosophila SNAIL protein, and is also thought to be critical for mesoderm formation in the developing embryo. At least two variants of a similar processed pseudogene have been found on chromosome 2.

**Target:**

Snail Family Transcriptional Repressor 1 / SNAIL (SNAI1)

# Datasheet

Version: 4.0.0  
Revision date: 07 Sep 2025



Clonality:	Polyclonal
Reactivity:	Human, Mouse, Rat
Tested Applications:	IHC, IF/ICC
Host:	Rabbit
Recommended dilutions:	IHC-P: 1/50 - 1/100, IF/ICC: 1/50 - 1/200. Not tested in IHC-F. Optimal dilutions/concentrations should be determined by the end user.
Conjugation:	Unconjugated
Immunogen:	A synthetic peptide corresponding to human Snail
Isotype:	IgG
Form:	Liquid
Purification:	Purified by affinity chromatography.
Storage:	Aliquot and store at -20°C. Avoid repeated freeze/thaw cycles.
UniProt Primary AC:	O95863 ( <a href="#">UniProt</a> , <a href="#">ExPASy</a> )
Gene Symbol:	SNAI1
GeneID:	<a href="#">6615</a>
NCBI Accession:	NP_005976.2
KEGG:	hsa:6615
String:	<a href="#">9606.ENSP00000244050</a>
Buffer:	PBS, pH 7.3, containing 0.02% sodium azide, 50% glycerol.
Concentration:	1 mg/ml
Note:	THIS PRODUCT IS FOR RESEARCH USE ONLY. NOT FOR USE IN DIAGNOSTIC, THERAPEUTIC OR COSMETIC PROCEDURES. NOT FOR HUMAN OR ANIMAL CONSUMPTION.