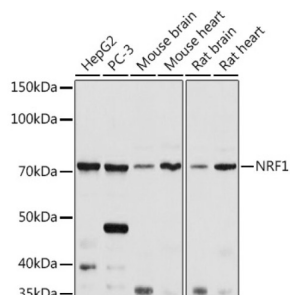
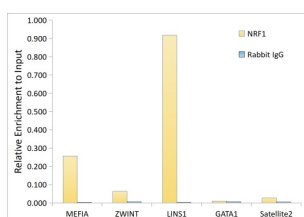


## Nuclear Factor Erythroid 2-Related Factor 1 (NFE2L1) Antibody

Catalogue No.: abx004247



Western blot analysis of various lysates using NRF1 Antibody at 1/1000 dilution. Secondary antibody: HRP-conjugated Goat anti-Rabbit IgG (H+L) at 1/10000 dilution. Lysates/proteins: 25 µg per lane. Blocking buffer: 3% nonfat dry milk in TBST. Exposure time: 5s.



Chromatin immunoprecipitation analysis of extracts of HepG2 cells, using NRF1 antibody and rabbit IgG. The amount of immunoprecipitated DNA was checked by quantitative PCR. Histogram was constructed by the ratios of the immunoprecipitated DNA to the input.

NFE2L1 Antibody is a Rabbit Polyclonal antibody against NFE2L1. This gene encodes a protein that homodimerizes and functions as a transcription factor which activates the expression of some key metabolic genes regulating cellular growth and nuclear genes required for respiration, heme biosynthesis, and mitochondrial DNA transcription and replication. The protein has also been associated with the regulation of neurite outgrowth. Alternate transcriptional splice variants, which encode the same protein, have been characterized. Additional variants encoding different protein isoforms have been described but they have not been fully characterized. Confusion has occurred in bibliographic databases due to the shared symbol of NFE2L1 for this gene and for "nuclear factor (erythroid-derived 2)-like 1" which has an official symbol of NFE2L1.

**Target:** Nuclear Factor Erythroid 2-Related Factor 1 (NFE2L1)

**Clonality:** Polyclonal

**Reactivity:** Human, Mouse, Rat

**Tested Applications:** ELISA, WB, ChIP

**Host:** Rabbit

**Recommended dilutions:** ELISA: 1 µg/ml, WB: 1/500 - 1/1000, ChIP: 5 µg antibody per 10 µg - 15 µg of Chromatin. Optimal dilutions/concentrations should be determined by the end user.

**Conjugation:** Unconjugated

**Immunogen:** Recombinant fusion protein containing a sequence corresponding to amino acids 240-449 of human NRF1.

# Datasheet

Version: 3.0.0  
Revision date: 13 Jun 2025



Isotype:	IgG
Form:	Liquid
Purification:	Purified by affinity chromatography.
Storage:	Aliquot and store at -20°C. Avoid repeated freeze/thaw cycles.
UniProt Primary AC:	Q16656 ( <a href="#">UniProt</a> , <a href="#">ExPASy</a> )
Gene Symbol:	NRF1
GeneID:	<a href="#">4899</a>
NCBI Accession:	NP_001035199.1
KEGG:	hsa:4899
String:	<a href="#">9606.ENSP00000376924</a>
Molecular Weight:	Calculated MW: 54 kDa Observed MW: 70 kDa
Buffer:	PBS, pH 7.3, containing 0.02% sodium azide, 50% glycerol.
Concentration:	> 0.2 mg/ml
Note:	THIS PRODUCT IS FOR RESEARCH USE ONLY. NOT FOR USE IN DIAGNOSTIC, THERAPEUTIC OR COSMETIC PROCEDURES. NOT FOR HUMAN OR ANIMAL CONSUMPTION.