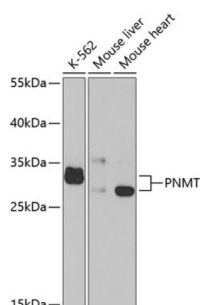


## Phenylethanolamine N-Methyltransferase (PNMT) Antibody

Catalogue No.: abx004252



Western blot analysis of extracts of various cell lines using PNMT Antibody (1/1000 dilution).

PNMT Antibody is a Rabbit Polyclonal antibody against PNMT. The product of this gene catalyzes the last step of the catecholamine biosynthesis pathway, which methylates norepinephrine to form epinephrine (adrenaline). The enzyme also has beta-carboline 2N-methyltransferase activity. This gene is thought to play a key step in regulating epinephrine production. Alternatively spliced transcript variants have been found for this gene.

<b>Target:</b>	Phenylethanolamine N-Methyltransferase (PNMT)
<b>Clonality:</b>	Polyclonal
<b>Reactivity:</b>	Human, Mouse
<b>Tested Applications:</b>	WB
<b>Host:</b>	Rabbit
<b>Recommended dilutions:</b>	WB: 1/500 - 1/2000. Optimal dilutions/concentrations should be determined by the end user.
<b>Conjugation:</b>	Unconjugated
<b>Immunogen:</b>	Recombinant fusion protein corresponding to human PNMT
<b>Isotype:</b>	IgG
<b>Form:</b>	Liquid
<b>Purification:</b>	Purified by affinity chromatography.
<b>Storage:</b>	Aliquot and store at -20°C. Avoid repeated freeze/thaw cycles.
<b>UniProt Primary AC:</b>	P11086 ( <a href="#">UniProt</a> , <a href="#">ExPASy</a> )
<b>Gene Symbol:</b>	PNMT

# Datasheet

Version: 3.0.0

Revision date: 23 Jun 2025



**GeneID:** [5409](#)

**NCBI Accession:** NP\_002677.1

**KEGG:** hsa:5409

**String:** [9606.ENSP00000269582](#)

**Molecular Weight:** Calculated MW: 30 kDa  
Observed MW: 31-34 kDa

**Buffer:** PBS, pH 7.3, containing 0.02% sodium azide, 50% glycerol.

**Concentration:** 1 mg/ml

**Note:** THIS PRODUCT IS FOR RESEARCH USE ONLY. NOT FOR USE IN DIAGNOSTIC, THERAPEUTIC OR COSMETIC PROCEDURES. NOT FOR HUMAN OR ANIMAL CONSUMPTION.

For Reference Only