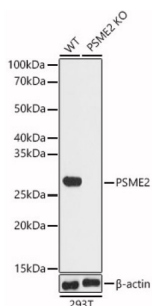


## Proteasome Activator Complex Subunit 2 (PSME2) Antibody

Catalogue No.: abx004261



Western blot analysis of lysates from wild type (WT) and PSME2 knockout (KO) 293T(KO) cells, using [KO Validated] PSME2 Antibody at 1/1000 dilution. Secondary antibody: HRP-conjugated Goat anti-Rabbit IgG (H+L) at 1/10000 dilution. Lysates/proteins: 25 µg per lane. Blocking buffer: 3% nonfat dry milk in TBST. Exposure time: 1s.

PSME2 Antibody is a Rabbit Polyclonal antibody against PSME2. The 26S proteasome is a multicatalytic proteinase complex with a highly ordered structure composed of 2 complexes, a 20S core and a 19S regulator. The 20S core is composed of 4 rings of 28 non-identical subunits; 2 rings are composed of 7 alpha subunits and 2 rings are composed of 7 beta subunits. The 19S regulator is composed of a base, which contains 6 ATPase subunits and 2 non-ATPase subunits, and a lid, which contains up to 10 non-ATPase subunits. Proteasomes are distributed throughout eukaryotic cells at a high concentration and cleave peptides in an ATP/ubiquitin-dependent process in a non-lysosomal pathway. An essential function of a modified proteasome, the immunoproteasome, is the processing of class I MHC peptides. The immunoproteasome contains an alternate regulator, referred to as the 11S regulator or PA28, that replaces the 19S regulator. Three subunits (alpha, beta and gamma) of the 11S regulator have been identified. This gene encodes the beta subunit of the 11S regulator, one of the two 11S subunits that is induced by gamma-interferon. Three beta and three alpha subunits combine to form a heterohexameric ring. Six pseudogenes have been identified on chromosomes 4, 5, 8, 10 and 13.

<b>Target:</b>	Proteasome Activator Complex Subunit 2 (PSME2)
<b>Clonality:</b>	Polyclonal
<b>Reactivity:</b>	Human, Mouse
<b>Tested Applications:</b>	ELISA, WB
<b>Host:</b>	Rabbit
<b>Recommended dilutions:</b>	ELISA: 1 µg/ml, WB: 1/500 - 1/1000. Optimal dilutions/concentrations should be determined by the end user.
<b>Conjugation:</b>	Unconjugated
<b>Immunogen:</b>	Recombinant fusion protein containing a sequence corresponding to amino acids 1-239 of human PSME2.
<b>Isotype:</b>	IgG
<b>Form:</b>	Liquid
<b>Purification:</b>	Purified by affinity chromatography.

# Datasheet

Version: 4.0.0  
Revision date: 13 Jul 2025



**Storage:** Aliquot and store at -20°C. Avoid repeated freeze/thaw cycles.

**UniProt Primary AC:** Q9UL46 ([UniProt](#), [ExPASy](#))

**Gene Symbol:** PSME2

**GeneID:** [5721](#)

**OMIM:** [602161](#)

**NCBI Accession:** NP\_002809.2

**HGNC:** 9569

**KEGG:** hsa:5721

**Ensembl:** ENSG00000100911

**String:** [9606.ENSP00000216802](#)

**Molecular Weight:** Calculated MW: 27 kDa  
Observed MW: 27 kDa

**Buffer:** PBS, pH 7.3, containing 0.02% sodium azide, 50% glycerol.

**Concentration:** > 0.2 mg/ml

**Note:** THIS PRODUCT IS FOR RESEARCH USE ONLY. NOT FOR USE IN DIAGNOSTIC, THERAPEUTIC OR COSMETIC PROCEDURES. NOT FOR HUMAN OR ANIMAL CONSUMPTION.