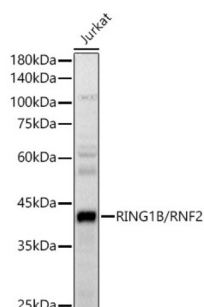
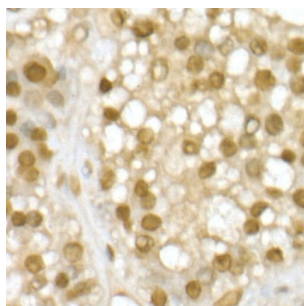


## Ring Finger Protein 2 (RNF2) Antibody

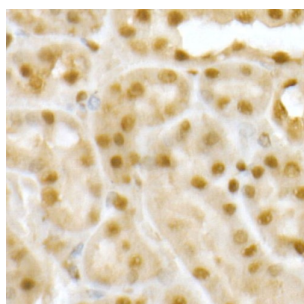
Catalogue No.: abx004262



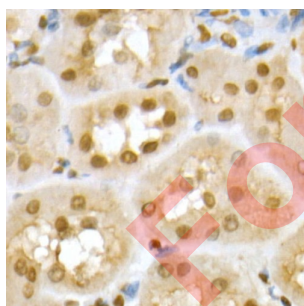
Western blot analysis of lysates from Jurkat cells, using RING1B/RNF2 Antibody at 1/400 dilution. Secondary antibody: HRP-conjugated Goat anti-Rabbit IgG (H+L) at 1/10000 dilution. Lysates/proteins: 25 µg per lane. Blocking buffer: 3% nonfat dry milk in TBST. Exposure time: 1s.



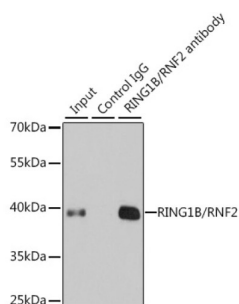
Immunohistochemistry analysis of paraffin-embedded Human liver cancer using RING1B/RNF2 Antibody at dilution of 1/50 (40x lens). High pressure antigen retrieval performed in 0.01 M Citrate buffer (pH 6.0) prior to IHC staining.



Immunohistochemistry analysis of paraffin-embedded Mouse kidney using RING1B/RNF2 Antibody at dilution of 1/50 (40x lens). High pressure antigen retrieval performed in 0.01 M Citrate buffer (pH 6.0) prior to IHC staining.



Immunohistochemistry analysis of paraffin-embedded Rat kidney using RING1B/RNF2 Antibody at dilution of 1/50 (40x lens). High pressure antigen retrieval performed in 0.01 M Citrate buffer (pH 6.0) prior to IHC staining.

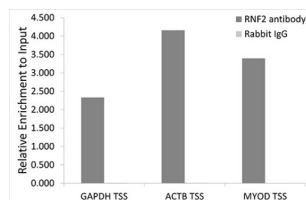


Immunoprecipitation analysis of 200 µg extracts of 293T cells using 1 µg RING1B/RNF2 antibody. Western blot was performed from the immunoprecipitate using RING1B/RNF2 antibody at a dilution of 1/1000.

# Datasheet

Version: 4.0.0

Revision date: 23 Aug 2025



Chromatin immunoprecipitation analysis of extracts of HeLa cells, using RING1B/RNF2 antibody and rabbit IgG. The amount of immunoprecipitated DNA was checked by quantitative PCR. Histogram was constructed by the ratios of the immunoprecipitated DNA to the input.

RNF2 Antibody is a Rabbit Polyclonal antibody against RNF2. Polycomb group (PcG) of proteins form the multiprotein complexes that are important for the transcription repression of various genes involved in development and cell proliferation. The protein encoded by this gene is one of the PcG proteins. It has been shown to interact with, and suppress the activity of, transcription factor CP2 (TFCP2/CP2). Studies of the mouse counterpart suggested the involvement of this gene in the specification of anterior-posterior axis, as well as in cell proliferation in early development. This protein was also found to interact with huntingtin interacting protein 2 (HIP2), an ubiquitin-conjugating enzyme, and possess ubiquitin ligase activity.

**Target:** Ring Finger Protein 2 (RNF2)

**Clonality:** Polyclonal

**Reactivity:** Human, Mouse, Rat

**Tested Applications:** ELISA, WB, IHC, IF/ICC, IP, ChIP

**Host:** Rabbit

**Recommended dilutions:** ELISA: 1 µg/ml, WB: 1/500 - 1/1000, IHC-P: 1/50 - 1/200, IF/ICC: 1/50 - 1/200, IP: 0.5 µg - 4 µg antibody per 200 µg - 400 µg extracts of whole cells, ChIP: 5 µg antibody per 10 µg - 15 µg of Chromatin. Not tested in IHC-F. Optimal dilutions/concentrations should be determined by the end user.

**Conjugation:** Unconjugated

**Immunogen:** Recombinant protein corresponding to RNF2. The exact sequence is proprietary.

**Isotype:** IgG

**Form:** Liquid

**Purification:** Purified by affinity chromatography.

**Storage:** Aliquot and store at -20°C. Avoid repeated freeze/thaw cycles.

**UniProt Primary AC:** Q99496 ([UniProt](#), [ExPASy](#))

# Datasheet

Version: 4.0.0

Revision date: 23 Aug 2025



**Gene Symbol:** RNF2

**GeneID:** [6045](#)

**NCBI Accession:** NP\_009143.1

**KEGG:** hsa:6045

**String:** [9606.ENSP00000356480](#)

**Molecular Weight:** Calculated MW: 38 kDa  
Observed MW: 41 kDa

**Buffer:** PBS, pH 7.3, containing 0.05% Proclin-300, 50% glycerol.

**Concentration:** > 0.2 mg/ml

**Note:** THIS PRODUCT IS FOR RESEARCH USE ONLY. NOT FOR USE IN DIAGNOSTIC, THERAPEUTIC OR COSMETIC PROCEDURES. NOT FOR HUMAN OR ANIMAL CONSUMPTION.

For Reference Only