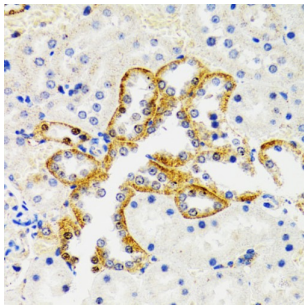
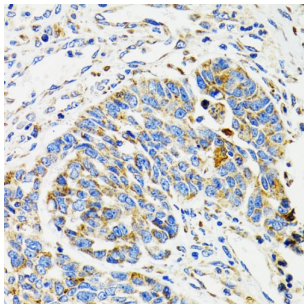


SH2B Adaptor Protein 1 (SH2B1) Antibody

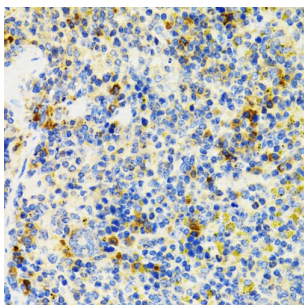
Catalogue No.: abx004263



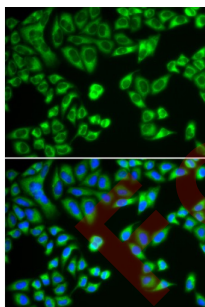
Immunohistochemistry of paraffin-embedded Rat kidney using SH2B1 Antibody (1/100 dilution, 40x lens).



Immunohistochemistry of paraffin-embedded Human esophageal cancer using SH2B1 Antibody (1/100 dilution, 40x lens).



Immunohistochemistry of paraffin-embedded Mouse spleen using SH2B1 Antibody (1/100 dilution, 40x lens).



Immunofluorescence analysis of HeLa cells using SH2B1 Antibody

SH2B1 Antibody is a Rabbit Polyclonal antibody against SH2B1. This gene encodes a member of the SH2-domain containing mediators family. The encoded protein mediates activation of various kinases and may function in cytokine and growth factor receptor signaling and cellular transformation. Alternatively spliced transcript variants have been described.

Target: SH2B Adaptor Protein 1 (SH2B1)

Clonality: Polyclonal

Datasheet

Version: 5.0.0
Revision date: 05 Mar 2025



Reactivity:	Human, Mouse, Rat
Tested Applications:	IHC, IF/ICC
Host:	Rabbit
Recommended dilutions:	IHC-P: 1/50 - 1/200, IF/ICC: 1/20 - 1/50. Not tested in IHC-F. Optimal dilutions/concentrations should be determined by the end user.
Conjugation:	Unconjugated
Immunogen:	Recombinant fusion protein corresponding to human SH2B1
Isotype:	IgG
Form:	Liquid
Purification:	Purified by affinity chromatography.
Storage:	Aliquot and store at -20°C. Avoid repeated freeze/thaw cycles.
UniProt Primary AC:	Q9NRF2 (UniProt , ExPASy)
Gene Symbol:	SH2B1
GeneID:	25970
NCBI Accession:	NP_056318.2
String:	9606.ENSP00000321221
Buffer:	PBS, pH 7.3, containing 0.02% sodium azide, 50% glycerol.
Concentration:	1 mg/ml
Note:	THIS PRODUCT IS FOR RESEARCH USE ONLY. NOT FOR USE IN DIAGNOSTIC, THERAPEUTIC OR COSMETIC PROCEDURES. NOT FOR HUMAN OR ANIMAL CONSUMPTION.