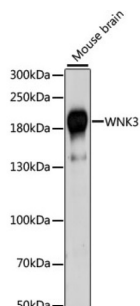


## WNK Lysine Deficient Protein Kinase 3 (WNK3) Antibody

Catalogue No.: abx004266



Western blot analysis of extracts of Mouse brain using WNK3 Antibody (1/1000 dilution).

WNK3 Antibody is a Rabbit Polyclonal antibody against WNK3. This gene encodes a protein belonging to the 'with no lysine' family of serine-threonine protein kinases. These family members lack the catalytic lysine in subdomain II, and instead have a conserved lysine in subdomain I. This family member functions as a positive regulator of the transcellular  $\text{Ca}^{2+}$  transport pathway, and it plays a role in the increase of cell survival in a caspase-3-dependent pathway. Alternative splicing results in multiple transcript variants.

<b>Target:</b>	WNK Lysine Deficient Protein Kinase 3 (WNK3)
<b>Clonality:</b>	Polyclonal
<b>Reactivity:</b>	Mouse
<b>Tested Applications:</b>	WB
<b>Host:</b>	Rabbit
<b>Recommended dilutions:</b>	WB: 1/200 - 1/2000. Optimal dilutions/concentrations should be determined by the end user.
<b>Conjugation:</b>	Unconjugated
<b>Immunogen:</b>	Recombinant fusion protein corresponding to human WNK3
<b>Isotype:</b>	IgG
<b>Form:</b>	Liquid
<b>Purification:</b>	Purified by affinity chromatography.
<b>Storage:</b>	Aliquot and store at $-20^{\circ}\text{C}$ . Avoid repeated freeze/thaw cycles.
<b>UniProt Primary AC:</b>	Q9BYP7 ( <a href="#">UniProt</a> , <a href="#">ExPASy</a> )

# Datasheet

Version: 4.0.0

Revision date: 22 Aug 2025



**Gene Symbol:** WNK3

**GeneID:** [65267](#)

**String:** [9606.ENSF00000346667](#)

**Molecular Weight:** Calculated MW: 191 kDa/192 kDa/197 kDa/198 kDa  
Observed MW: 198 kDa

**Buffer:** PBS, pH 7.3, containing 0.02% sodium azide, 50% glycerol.

**Concentration:** 1 mg/ml

**Note:** THIS PRODUCT IS FOR RESEARCH USE ONLY. NOT FOR USE IN DIAGNOSTIC, THERAPEUTIC OR COSMETIC PROCEDURES. NOT FOR HUMAN OR ANIMAL CONSUMPTION.

For Reference Only