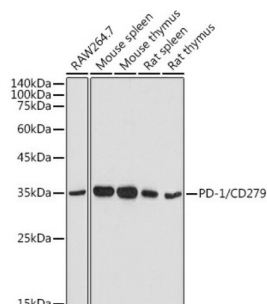
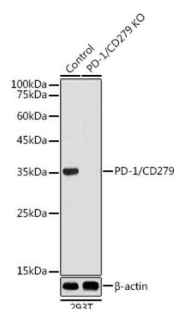


## Programmed Cell Death Protein 1 (PDCD1) Antibody

Catalogue No.: abx004272



Western blot analysis of extracts of various cell lines using PD-1/CD279 Antibody (1/500 dilution).



Western blot analysis of extracts from normal (control) and PD-1/CD279 knockout (KO) 293T cells using PD-1/CD279 Antibody (1/500 dilution).

PDCD1 Antibody is a Rabbit Polyclonal antibody against PDCD1. This gene encodes a cell surface membrane protein of the immunoglobulin superfamily. This protein is expressed in pro-B-cells and is thought to play a role in their differentiation. In mice, expression of this gene is induced in the thymus when anti-CD3 antibodies are injected and large numbers of thymocytes undergo apoptosis. Mice deficient for this gene bred on a BALB/c background developed dilated cardiomyopathy and died from congestive heart failure. These studies suggest that this gene product may also be important in T cell function and contribute to the prevention of autoimmune diseases.

**Target:** Programmed Cell Death Protein 1 (PDCD1)

**Clonality:** Polyclonal

**Reactivity:** Human, Mouse, Rat

**Tested Applications:** WB

**Host:** Rabbit

**Recommended dilutions:** WB: 1/500 - 1/2000. Optimal dilutions/concentrations should be determined by the end user.

**Conjugation:** Unconjugated

**Immunogen:** Recombinant fusion protein corresponding to human PD-1/CD279

**Isotype:** IgG

# Datasheet

Version: 4.0.0  
Revision date: 10 Jun 2025



<b>Form:</b>	Liquid
<b>Purification:</b>	Purified by affinity chromatography.
<b>Storage:</b>	Aliquot and store at -20°C. Avoid repeated freeze/thaw cycles.
<b>UniProt Primary AC:</b>	Q15116 ( <a href="#">UniProt</a> , <a href="#">ExPASy</a> )
<b>Gene Symbol:</b>	PDCD1
<b>GeneID:</b>	<a href="#">5133</a>
<b>OMIM:</b>	<a href="#">600244</a>
<b>NCBI Accession:</b>	NP_005009.2
<b>KEGG:</b>	hsa:5133
<b>String:</b>	<a href="#">9606.ENSP00000335062</a>
<b>Molecular Weight:</b>	Calculated MW: 31 kDa Observed MW: 35 kDa
<b>Buffer:</b>	PBS, pH 7.3, containing 0.05% Proclin-300, 50% glycerol.
<b>Concentration:</b>	1 mg/ml
<b>Note:</b>	THIS PRODUCT IS FOR RESEARCH USE ONLY. NOT FOR USE IN DIAGNOSTIC, THERAPEUTIC OR COSMETIC PROCEDURES. NOT FOR HUMAN OR ANIMAL CONSUMPTION.