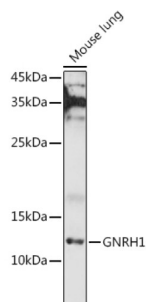
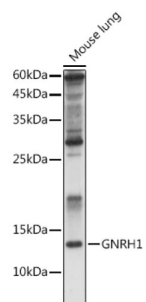


Progonadoliberin 1 (GNRH1) Antibody

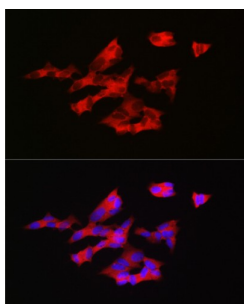
Catalogue No.: abx004300



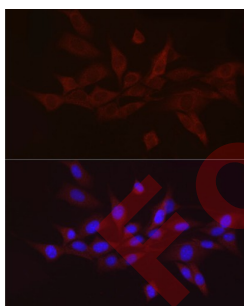
Western blot analysis of extracts of Mouse lung using GNRH1 Antibody (1/1000 dilution).



Western blot analysis of extracts of Rat kidney using GNRH1 Antibody (1/1000 dilution).



Immunofluorescence analysis of SH-SY5Y cells using GNRH1 antibody (1/200 dilution, 40x lens). Blue: DAPI for nuclear staining.



Immunofluorescence analysis of NIH/3T3 cells using GNRH1 antibody (1/50 dilution, 40x lens). Blue: DAPI for nuclear staining.

Progonadoliberin 1 (Pro-GNRH1) Antibody is a Rabbit Polyclonal antibody against Progonadoliberin 1 (Pro-GNRH1). The protein encoded by this gene is secreted and then cleaved to form the 10 aa luteinizing hormone-releasing hormone (LHRH, also known as gonadoliberin-1), and prolactin release-inhibiting factor (also known as GnRH-associated peptide 1). LHRH stimulates the release of luteinizing and follicle stimulating hormones, which are important for reproduction. Mutation in this gene are associated with hypogonadotropic hypogonadism. Alternatively spliced transcript variants have been described for this gene.

Target: Progonadoliberin 1 (GNRH1)

Datasheet

Version: 3.0.0
Revision date: 06 Oct 2025



Clonality:	Polyclonal
Reactivity:	Human, Mouse, Rat
Tested Applications:	WB, IF/ICC
Host:	Rabbit
Recommended dilutions:	WB: 1/500 - 1/2000, IF/ICC: 1/50 - 1/200. Optimal dilutions/concentrations should be determined by the end user.
Conjugation:	Unconjugated
Immunogen:	Recombinant fusion protein corresponding to human GNRH1
Isotype:	IgG
Form:	Liquid
Purification:	Purified by affinity chromatography.
Storage:	Aliquot and store at -20°C. Avoid repeated freeze/thaw cycles.
UniProt Primary AC:	P01148 (UniProt , ExPASy)
Gene Symbol:	GNRH1
GeneID:	2796
NCBI Accession:	NP_001076580.1
KEGG:	hsa:2796
String:	9606.ENSP00000276414
Molecular Weight:	Calculated MW: 10 kDa Observed MW: 12 kDa
Buffer:	PBS, pH 7.3, containing 0.05% Proclin-300, 50% glycerol.
Concentration:	1 mg/ml
Note:	THIS PRODUCT IS FOR RESEARCH USE ONLY. NOT FOR USE IN DIAGNOSTIC, THERAPEUTIC OR COSMETIC PROCEDURES. NOT FOR HUMAN OR ANIMAL CONSUMPTION.