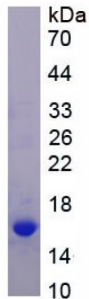
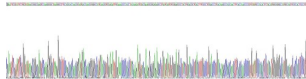


Human Low-Density Lipoprotein Receptor-Related Protein 1 (LRP1) Protein

Catalogue No.: abx067817



SDS-PAGE analysis of recombinant Human Low-Density Lipoprotein Receptor-Related Protein 1 (LRP1) Protein.



Gene sequencing extract of recombinant Human Low-Density Lipoprotein Receptor-Related Protein 1 (LRP1) Protein.

Low-Density Lipoprotein Receptor-Related Protein 1 (LRP1) is a recombinant Human protein expressed in E. coli.

This protein is the immunogen for the following antibodies: [abx104531](#)

Target:	Low-Density Lipoprotein Receptor-Related Protein 1 (LRP1)
Research Area:	Cellular Differentiation and Adhesion, Metabolic Pathways, Neuroscience
Origin:	Human
Expression:	Recombinant
Tested Applications:	WB, SDS-PAGE
Host:	E. coli
Conjugation:	Unconjugated
Form:	Lyophilized
Activity:	Not tested

Datasheet

Version: 8.0.0
Revision date: 18 Sep 2025



Purity: > 90%

Reconstitution: To keep the original salt concentration, we recommend reconstituting to the original concentration prior to lyophilization (see Concentration) in ddH₂O. If a lower concentration is required, dilute in 10 mM PBS, pH 7.4. If a higher concentration is required, the product can be reconstituted directly in 10 mM PBS, pH 7.4, though please note that this will change the overall salt concentration. The stock concentration should be between 0.1-1.0 mg/ml. Do not vortex.

Storage: Store at 2-8°C for up to one month. For long-term storage, store at -80°C. Avoid repeated freeze/thaw cycles.

UniProt Primary AC: Q07954 ([UniProt](#), [ExPASy](#))

KEGG: hsa:4035

String: [9606.ENSP00000243077](#)

Molecular Weight: Calculated MW: 13.0 kDa
Observed MW (SDS-PAGE): 16 kDa

Sequence Fragment: Val4441-Ala4544

Sequence: VFWYKRRVQG AKGFQHRMT NGAMNVEIGN PTYKMYEGGE PDDVGGLLDA DFALDPDKPT
NFTNPVYATL YMGGHGSRHS LASTDEKREL LGRGPEDEIG DPLA

Tag: N-terminal His tag

Buffer: Prior to lyophilization: PBS, pH 7.4, containing 0.01% Sarcosyl, 5% Trehalose.

Concentration: Prior to lyophilization: 400 µg/ml

Note: THIS PRODUCT IS FOR RESEARCH USE ONLY. NOT FOR USE IN DIAGNOSTIC, THERAPEUTIC OR COSMETIC PROCEDURES. NOT FOR HUMAN OR ANIMAL CONSUMPTION.