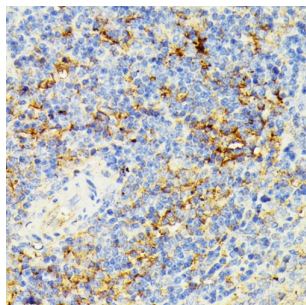
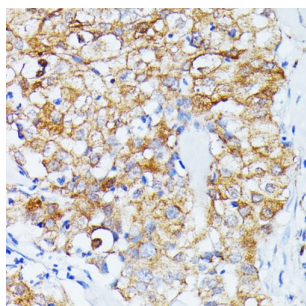


## Endothelin Converting Enzyme 1 (ECE1) Antibody

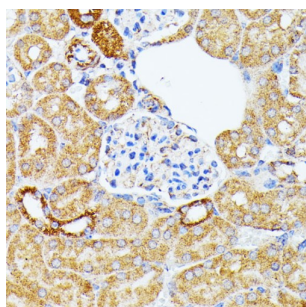
Catalogue No.: abx004310



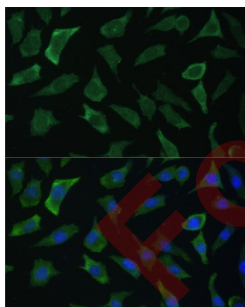
Immunohistochemistry of paraffin-embedded rat spleen using ECE1 Antibody (1/100 dilution, 40x lens). Microwave antigen retrieval was performed in 10 mM PBS buffer pH 7.2 before commencing with IHC staining protocol.



Immunohistochemistry of paraffin-embedded human mammary cancer using ECE1 Antibody (1/100 dilution, 40x lens). Microwave antigen retrieval was performed in 10 mM PBS buffer pH 7.2 before commencing with IHC staining protocol.



Immunohistochemistry of paraffin-embedded mouse kidney using ECE1 Antibody (1/100 dilution, 40x lens). Microwave antigen retrieval was performed in 10 mM PBS buffer pH 7.2 before commencing with IHC staining protocol.



Immunofluorescence analysis of L929 cells using ECE1 Antibody (1/100 dilution, 40x lens). Blue: DAPI for nuclear staining.

ECE1 Antibody is a Rabbit Polyclonal antibody against ECE1. The protein encoded by this gene is involved in proteolytic processing of endothelin precursors to biologically active peptides. Mutations in this gene are associated with Hirschsprung disease, cardiac defects and autonomic dysfunction. Alternatively spliced transcript variants encoding different isoforms have been noted for this gene.

**Target:** Endothelin Converting Enzyme 1 (ECE1)

**Clonality:** Polyclonal

# Datasheet

Version: 4.0.0  
Revision date: 13 Jun 2025



<b>Reactivity:</b>	Human, Mouse, Rat
<b>Tested Applications:</b>	IHC, IF/ICC
<b>Host:</b>	Rabbit
<b>Recommended dilutions:</b>	IHC-P: 1/50 - 1/200, IF/ICC: 1/50 - 1/200. Not tested in IHC-F. Optimal dilutions/concentrations should be determined by the end user.
<b>Conjugation:</b>	Unconjugated
<b>Immunogen:</b>	Recombinant fusion protein corresponding to human ECE1
<b>Isotype:</b>	IgG
<b>Form:</b>	Liquid
<b>Purification:</b>	Purified by affinity chromatography.
<b>Storage:</b>	Aliquot and store at -20°C. Avoid repeated freeze/thaw cycles.
<b>UniProt Primary AC:</b>	P42892 ( <a href="#">UniProt</a> , <a href="#">ExPASy</a> )
<b>Gene Symbol:</b>	ECE1
<b>GeneID:</b>	<a href="#">1889</a>
<b>NCBI Accession:</b>	NP_001388.1
<b>Molecular Weight:</b>	Calculated MW: 85 kDa/87 kDa
<b>Buffer:</b>	PBS, pH 7.3, containing 0.01% thiomersal, 50% glycerol.
<b>Concentration:</b>	1 mg/ml
<b>Note:</b>	THIS PRODUCT IS FOR RESEARCH USE ONLY. NOT FOR USE IN DIAGNOSTIC, THERAPEUTIC OR COSMETIC PROCEDURES. NOT FOR HUMAN OR ANIMAL CONSUMPTION.