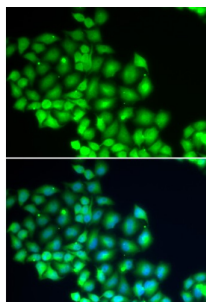


General Transcription And DNA Repair Factor IIH Helicase Subunit XPD (ERCC2) Antibody

Catalogue No.: abx004312



Immunofluorescence analysis of HeLa cells using ERCC2 Antibody

ERCC2 Antibody is a Rabbit Polyclonal antibody against ERCC2. The nucleotide excision repair pathway is a mechanism to repair damage to DNA. The protein encoded by this gene is involved in transcription-coupled nucleotide excision repair and is an integral member of the basal transcription factor BTF2/TFIIH complex. The gene product has ATP-dependent DNA helicase activity and belongs to the RAD3/XPD subfamily of helicases. Defects in this gene can result in three different disorders, the cancer-prone syndrome xeroderma pigmentosum complementation group D, trichothiodystrophy, and Cockayne syndrome. Alternatively spliced transcript variants encoding different isoforms have been found for this gene.

Target:	General Transcription And DNA Repair Factor IIH Helicase Subunit XPD (ERCC2)
Clonality:	Polyclonal
Reactivity:	Human, Rat
Tested Applications:	IF/ICC
Host:	Rabbit
Recommended dilutions:	IF/ICC: 1/50 - 1/100. Optimal dilutions/concentrations should be determined by the end user.
Conjugation:	Unconjugated
Immunogen:	Recombinant fusion protein corresponding to human ERCC2
Isotype:	IgG
Form:	Liquid
Purification:	Purified by affinity chromatography.
Storage:	Aliquot and store at -20°C. Avoid repeated freeze/thaw cycles.

Datasheet

Version: 4.0.0
Revision date: 26 Jun 2025



UniProt Primary AC: P18074 ([UniProt](#), [ExPASy](#))

Gene Symbol: ERCC2

GeneID: [2068](#)

NCBI Accession: NP_001124339.1

KEGG: hsa:2068

String: [9606.ENSP00000375809](#)

Buffer: PBS, pH 7.3, containing 0.02% sodium azide, 50% glycerol.

Concentration: 1 mg/ml

Note: THIS PRODUCT IS FOR RESEARCH USE ONLY. NOT FOR USE IN DIAGNOSTIC, THERAPEUTIC OR COSMETIC PROCEDURES. NOT FOR HUMAN OR ANIMAL CONSUMPTION.

For Reference Only