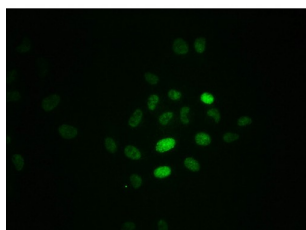


# Replication Protein A 32 kDa Subunit Phospho-Thr21 (RPA2 pT21) Antibody

Catalogue No.: abx242996



Immunofluorescence staining of HeLa cells using RPA2 (pT21) Antibody at 1/100, counter-stained with DAPI. The cells were fixed in 4% formaldehyde, permeabilized using 0.2% Triton X-100 and blocked in 10% normal Goat Serum. The cells were then incubated with the antibody overnight at 4°C. The secondary antibody was AF488-conjugated AffiniPure Goat Anti-Rabbit IgG (H+L).

RPA2 (pT21) Antibody is a Monoclonal Antibody against RPA2.

**Target:** Replication Protein A 32 kDa Subunit Phospho-Thr21 (RPA2 pT21)

**Clonality:** Monoclonal

**Target Modification:** Thr21

**Modification:** Phosphorylation

**Reactivity:** Human

**Expression:** Recombinant

**Tested Applications:** ELISA, IF/ICC

**Host:** Rabbit

**Recommended dilutions:** IF/ICC: 1/20 - 1/200. Optimal dilutions/concentrations should be determined by the end user.

**Conjugation:** Unconjugated

**Immunogen:** A synthesized peptide derived from human Phospho-RPA2 (T21).

**Isotype:** IgG

**Form:** Liquid

**Purification:** Purified by affinity chromatography.

# Datasheet

Version: 2.0.0

Revision date: 13 Aug 2025



**Storage:** Aliquot and store at -20 °C. Avoid repeated freeze/thaw cycles.

**UniProt Primary AC:** P15927 ([UniProt](#), [ExPASy](#))

**KEGG:** hsa:6118

**String:** [9606.ENSP00000363017](#)

**Buffer:** PBS, pH 7.4, 150 mM NaCl, 0.02% sodium azide and 50% glycerol.

**Note:** THIS PRODUCT IS FOR RESEARCH USE ONLY. NOT FOR USE IN DIAGNOSTIC, THERAPEUTIC OR COSMETIC PROCEDURES. NOT FOR HUMAN OR ANIMAL CONSUMPTION.

For Reference Only