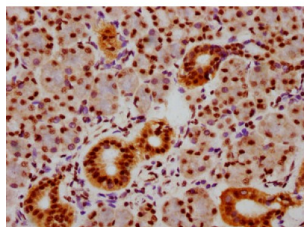


## SMAD5 (pS463 + pS465) Antibody

Catalogue No.: abx243006



Immunohistochemistry analysis of SMAD5 (pS463 + pS465) Antibody diluted at 1/100 and staining in paraffin-embedded human pancreatic tissue. After dewaxing and hydration, antigen retrieval was mediated by high pressure in a citrate buffer (pH 6.0). Section was blocked with 10% normal goat serum 30min at RT. Then primary antibody (1% BSA) was incubated at 4°C overnight. The primary is detected by a biotinylated secondary antibody and visualized using an HRP conjugated SP system.

SMAD5 (pS463 + pS465) Antibody is a Monoclonal Antibody against SMAD5.

**Target:** SMAD5

**Clonality:** Monoclonal

**Reactivity:** Human

**Expression:** Recombinant

**Tested Applications:** ELISA, IHC

**Host:** Rabbit

**Recommended dilutions:** IHC: 1/50 - 1/200. Optimal dilutions/concentrations should be determined by the end user.

**Conjugation:** Unconjugated

**Immunogen:** A synthesized peptide derived from human Phospho-SMAD5 (S463+S465).

**Isotype:** IgG

**Form:** Liquid

**Purification:** Purified by affinity chromatography.

**Storage:** Aliquot and store at -20 °C. Avoid repeated freeze/thaw cycles.

**UniProt Primary AC:** Q99717 ([UniProt](#), [ExPASy](#))

**KEGG:** hsa:4090

# Datasheet

Version: 3.0.0

Revision date: 27 Sep 2025



**String:** [9606.ENSF00000441954](#)

**Buffer:** PBS, pH 7.4, 150 mM NaCl, 0.02% sodium azide and 50% glycerol.

**Note:** THIS PRODUCT IS FOR RESEARCH USE ONLY. NOT FOR USE IN DIAGNOSTIC, THERAPEUTIC OR COSMETIC PROCEDURES. NOT FOR HUMAN OR ANIMAL CONSUMPTION.

For Reference Only