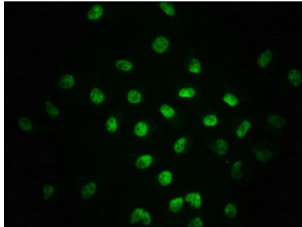


Mothers Against Decapentaplegic Homolog 2 Phospho-Ser255 (SMAD2 pS255) Antibody

Catalogue No.: abx243014



Immunofluorescence staining of A549 cells using SMAD2 (pS255) Antibody at 1/100, counter-stained with DAPI. The cells were fixed in 4% formaldehyde, permeabilized using 0.2% Triton X-100 and blocked in 10% normal Goat Serum. The cells were then incubated with the antibody overnight at 4°C. The secondary antibody was AF488-conjugated AffiniPure Goat Anti-Rabbit IgG (H+L).

SMAD2 (pS255) Antibody is a Monoclonal Antibody against SMAD2.

Target:	Mothers Against Decapentaplegic Homolog 2 Phospho-Ser255 (SMAD2 pS255)
Clonality:	Monoclonal
Target Modification:	Ser255
Modification:	Phosphorylation
Reactivity:	Human
Tested Applications:	ELISA, IF/ICC
Host:	Rabbit
Recommended dilutions:	IF/ICC: 1/20 - 1/200. Optimal dilutions/concentrations should be determined by the end user.
Conjugation:	Unconjugated
Immunogen:	A synthesized peptide derived from human Phospho-SMAD2 (S255).
Isotype:	IgG
Form:	Liquid
Purification:	Purified by affinity chromatography.
Storage:	Aliquot and store at -20 °C. Avoid repeated freeze/thaw cycles.

Datasheet

Version: 3.0.0

Revision date: 11 Sep 2025



UniProt Primary AC: Q15796 ([UniProt](#), [ExpASY](#))

KEGG: hsa:4087

String: [9606.ENSP00000262160](#)

Buffer: PBS, pH 7.4, 150 mM NaCl, 0.02% sodium azide and 50% glycerol.

Note: THIS PRODUCT IS FOR RESEARCH USE ONLY. NOT FOR USE IN DIAGNOSTIC, THERAPEUTIC OR COSMETIC PROCEDURES. NOT FOR HUMAN OR ANIMAL CONSUMPTION.

For Reference Only