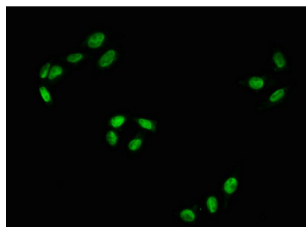


RAF1 (pS43) Antibody

Catalogue No.: abx243020



Immunofluorescence staining of HeLa using RAF1 (pS43) Antibody at 1/100, counter-stained with DAPI. The cells were fixed in 4% formaldehyde, permeabilized using 0.2% Triton X-100 and blocked in 10% normal Goat Serum. The cells were then incubated with the antibody overnight at 4°C. The secondary antibody was AF488-conjugated AffiniPure Goat Anti-Rabbit IgG (H+L).

RAF1 (pS43) Antibody is a Monoclonal Antibody against RAF1.

Target: RAF1

Clonality: Monoclonal

Reactivity: Human

Tested Applications: ELISA, IF/ICC

Host: Rabbit

Recommended dilutions: IF/ICC: 1/20 - 1/200. Optimal dilutions/concentrations should be determined by the end user.

Conjugation: Unconjugated

Immunogen: A synthesized peptide derived from human Phospho-RAF1 (S43).

Isotype: IgG

Form: Liquid

Purification: Purified by affinity chromatography.

Storage: Aliquot and store at -20 °C. Avoid repeated freeze/thaw cycles.

UniProt Primary AC: P04049 ([UniProt](#), [ExPASy](#))

KEGG: hsa:5894

String: [9606.ENSP00000251849](#)

Datasheet

Version: 3.0.0

Revision date: 30 Aug 2025



Buffer: PBS, pH 7.4, 150 mM NaCl, 0.02% sodium azide and 50% glycerol.

Note: THIS PRODUCT IS FOR RESEARCH USE ONLY. NOT FOR USE IN DIAGNOSTIC, THERAPEUTIC OR COSMETIC PROCEDURES. NOT FOR HUMAN OR ANIMAL CONSUMPTION.

For Reference Only