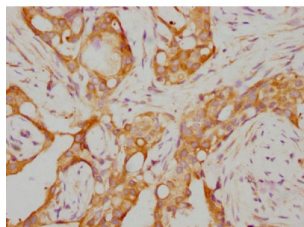


RARA Antibody

Catalogue No.: abx243102



Immunohistochemistry analysis of RARA Antibody diluted at 1/155 and staining in paraffin-embedded human breast cancer. After dewaxing and hydration, antigen retrieval was mediated by high pressure in a citrate buffer (pH 6.0). Section was blocked with 10% normal goat serum 30min at RT. Then primary antibody (1% BSA) was incubated at 4°C overnight. The primary is detected by a biotinylated secondary antibody and visualized using an HRP conjugated SP system.

RARA Antibody is a Monoclonal Antibody against RARA.

Target: RARA

Clonality: Monoclonal

Reactivity: Human

Expression: Recombinant

Tested Applications: ELISA, IHC

Host: Rabbit

Recommended dilutions: IHC: 1/50 - 1/200. Optimal dilutions/concentrations should be determined by the end user.

Conjugation: Unconjugated

Immunogen: A synthesized peptide derived from human RARA.

Isotype: IgG

Form: Liquid

Purification: Purified by affinity chromatography.

Storage: Aliquot and store at -20 °C. Avoid repeated freeze/thaw cycles.

UniProt Primary AC: P10276 ([UniProt](#), [ExPASy](#))

KEGG: hsa:5914

Datasheet

Version: 2.0.0

Revision date: 03 Aug 2025



String: [9606.ENSPO0000254066](#)

Buffer: PBS, pH 7.4, 150 mM NaCl, 0.02% sodium azide and 50% glycerol.

Note: THIS PRODUCT IS FOR RESEARCH USE ONLY. NOT FOR USE IN DIAGNOSTIC, THERAPEUTIC OR COSMETIC PROCEDURES. NOT FOR HUMAN OR ANIMAL CONSUMPTION.

For Reference Only