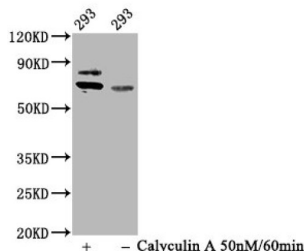


RPS6KB1 (pT421+pS424) Antibody

Catalogue No.: abx242973



Western Blot

Positive WB detected in: 293 whole cell lysate (treated with Calyculin A or not)

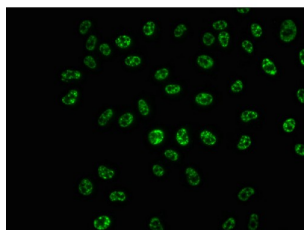
All lanes: Phospho-RPS6KB1 antibody at 0.93 µg/ml

Secondary

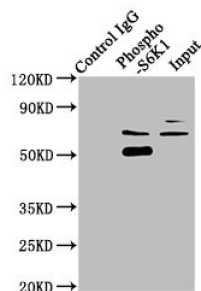
Goat polyclonal to rabbit IgG at 1/50000 dilution

Predicted band size: 70 KDa

Observed band size: 70 KDa



Immunofluorescence staining of HeLa cells using RPS6KB1 (pT421+pS424) Antibody at 1/100, counter-stained with DAPI. The cells were fixed in 4% formaldehyde, permeabilized using 0.2% Triton X-100 and blocked in 10% normal Goat Serum. The cells were then incubated with the antibody overnight at 4°C. The secondary antibody was AF488-conjugated AffiniPure Goat Anti-Rabbit IgG (H+L).



Immunoprecipitating Phospho-RPS6KB1 in HeLa whole cell lysate

Lane 1: Rabbit control IgG (1 µg) instead of RPS6KB1 (pT421+pS424) Antibody in HeLa whole cell lysate. For western blotting, a HRP-conjugated Protein G antibody was used as the secondary antibody (1/2000)

Lane 2: RPS6KB1 (pT421+pS424) Antibody (3 µg) + HeLa whole cell lysate (1 mg)

Lane 3: HeLa whole cell lysate (20 µg)

RPS6KB1 (pT421+pS424) Antibody is a Monoclonal Antibody against RPS6KB1.

Target: RPS6KB1

Clonality: Monoclonal

Reactivity: Human

Expression: Recombinant

Tested Applications: ELISA, WB, IF/ICC, IP

Host: Rabbit

Recommended dilutions: WB: 1/500 - 1/5000, IF/ICC: 1/20 - 1/200, IP: 1/200 - 1/1000. Optimal dilutions/concentrations should be determined by the end user.

Datasheet

Version: 2.0.0
Revision date: 23 Jul 2025



Conjugation:	Unconjugated
Immunogen:	A synthesized peptide derived from human Phospho-RPS6KB1 (T421+S424).
Isotype:	IgG
Form:	Liquid
Purification:	Purified by affinity chromatography.
Storage:	Aliquot and store at -20 °C. Avoid repeated freeze/thaw cycles.
UniProt Primary AC:	P23443 (UniProt , ExPASy)
KEGG:	hsa:6198
String:	9606.ENSP00000225577
Buffer:	PBS, pH 7.4, 150 mM NaCl, 0.02% sodium azide and 50% glycerol.
Note:	THIS PRODUCT IS FOR RESEARCH USE ONLY. NOT FOR USE IN DIAGNOSTIC, THERAPEUTIC OR COSMETIC PROCEDURES. NOT FOR HUMAN OR ANIMAL CONSUMPTION.